



HOTĂRÂREA nr. 49
privind aprobarea organigramei și a statului de funcții pentru Spitalul Clinic de Urgență pentru Copii „Sf. Maria” Iași, cu aplicare de la 01 martie 2026

Consiliul Județean Iași;

Având în vedere:

- a) Proiectul de hotărâre nr. 49/2026 privind aprobarea organigramei și a statului de funcții pentru Spitalul Clinic de Urgență pentru Copii „Sf. Maria” Iași, cu aplicare de la 01 martie 2026, inițiat de Președintele Consiliului Județean Iași, domnul Costel Alexe;
- b) Referatul de aprobare a organigramei și a statului de funcții pentru Spitalul Clinic de Urgență pentru Copii „Sf. Maria” Iași, cu aplicare de la 01 martie 2026, prezentat de Președintele Consiliului Județean Iași, în calitate sa de inițiator, înregistrat sub nr. 5944/19.02.2026;
- c) Raportul de specialitate privind aprobarea organigramei și a statului de funcții pentru Spitalul Clinic de Urgență pentru Copii „Sf. Maria” Iași, cu aplicare de la 01 martie 2026, elaborat de către Serviciul Resurse Umane și Salarizare și înregistrat sub nr. 5947/19.02.2026;
- d) Nota de fundamentare a Spitalului Clinic de Urgență pentru Copii „Sf. Maria” Iași nr. 5114/16.02.2026, transmisă cu adresa nr. 5114/16.02.2026, înregistrată la Consiliul Județean Iași sub nr. 5479/16.02.2026;
- e) Prevederile Hotărârii Consiliului Județean Iași nr. 570/22.12.2025 privind aprobarea organigramei și a statului de funcții pentru Spitalul Clinic de Urgență pentru Copii „Sf. Maria” Iași, cu aplicare de la 01 ianuarie 2026;
- f) Prevederile O.U.G. nr. 156/2024 privind unele măsuri fiscal-bugetare în domeniul cheltuielilor publice pentru fundamentarea bugetului general consolidat pe anul 2025, pentru modificarea și completarea unor acte normative, precum și pentru prorogarea unor termene;
- g) Prevederile Legii nr. 95/2006 privind reforma în domeniul sănătății, republicată, cu modificările și completările ulterioare;
- h) Prevederile Ordinului ministrului sănătății nr.1224/2010 privind aprobarea normativelor de personal pentru asistența medicală spitalicească, precum și pentru

modificarea și completarea Ordinului ministrului sănătății nr.1.778/2006 privind aprobarea normativelor de personal;

i) Prevederile Ordinului Ministrului Sănătății nr. 1500/2009 privind aprobarea Regulamentului de organizare și funcționare a secțiilor și compartimentelor de anestezie și terapie intensivă din unitățile sanitare, cu modificările și completările ulterioare;

j) Prevederile Ordinului Ministrului Sănătății nr. 1706/2007 privind conducerea și organizarea unităților și compartimentelor de primire a urgențelor, cu modificările și completările ulterioare;

k) Prevederile Ordinului Ministrului Sănătății nr. 1101/2016 privind aprobarea Normelor de supraveghere, prevenire și limitare a infecțiilor asociate asistenței medicale în unitățile sanitare;

l) Prevederile Ordinului Ministrului Sănătății nr. 1312/2020 privind organizarea și funcționarea structurii de management al calității serviciilor de sănătate în cadrul unităților sanitare cu paturi și serviciilor de ambulanță, în procesul de implementare a sistemului de management al calității serviciilor de sănătate și siguranței pacientului;

m) Prevederile Legii nr. 53/2003 – Codul Muncii, republicată, cu modificările și completările ulterioare;

n) Prevederile Hotărârii Consiliului Județean Iași nr. 166/30.06.2010 privind preluarea de către Județul Iași – Consiliul Județean Iași a ansamblului de competențe și atribuții pentru Spitalul Clinic de Urgență pentru Copii “Sf. Maria” Iași;

o) Prevederile art. 173, alin. (1), lit. a) și alin. (2), lit. c) din Ordonanță de Urgență a Guvernului nr. 57/2019 privind Codul administrativ, cu modificările și completările ulterioare;

p) Avizele comisiilor de specialitate din cadrul Consiliului Județean Iași din data de 24 februarie 2026;

q) Votul exprimat de către consilierii județeni și Președintele Consiliului Județean Iași în cadrul ședinței ordinare a Consiliului Județean Iași din data de 25 februarie 2026 și consemnat în procesul-verbal al acesteia, respectiv 34 voturi "*Pentru*";

În temeiul art. 182, alin. (1) și ale art. 196, alin. (1), lit. a) din Ordonanță de Urgență a Guvernului nr. 57/2019 privind Codul administrativ, cu modificările și completările ulterioare;

HOTĂRĂȘTE:

Art. 1. Se aprobă organigrama – Anexa 1 și statul de funcții - Anexa 2 pentru Spitalul Clinic de Urgență pentru Copii „Sf. Maria” Iași, cu aplicare de la 01 martie 2026. Anexele 1 și 2 fac parte integrantă din prezenta hotărâre.

Art. 2. Începând cu aceeași dată prevederile Hotărârii Consiliului Județean Iași nr.570/22.12.2025 își încetează aplicabilitatea.

Art. 3. Ducerea la îndeplinire a prevederilor prezentei hotărâri se asigură de către Serviciul Resurse Umane și Salarizare din cadrul autorității și de Spitalul Clinic de Urgență pentru Copii “Sf. Maria” Iași, prin grija managerului.

Art. 4. Prezenta Hotărâre se comunică:

- a) Serviciului Resurse Umane și Salarizare din cadrul autorității;
- b) Spitalului Clinic de Urgență pentru Copii „Sf. Maria” Iași;
- c) Instituției Prefectului Județului Iași.

Art. 5. Aducerea la cunoștință publică a prevederilor prezentei Hotărâri se asigură de către compartimentele de specialitate din cadrul Consiliului Județean Iași cu atribuții în acest sens.

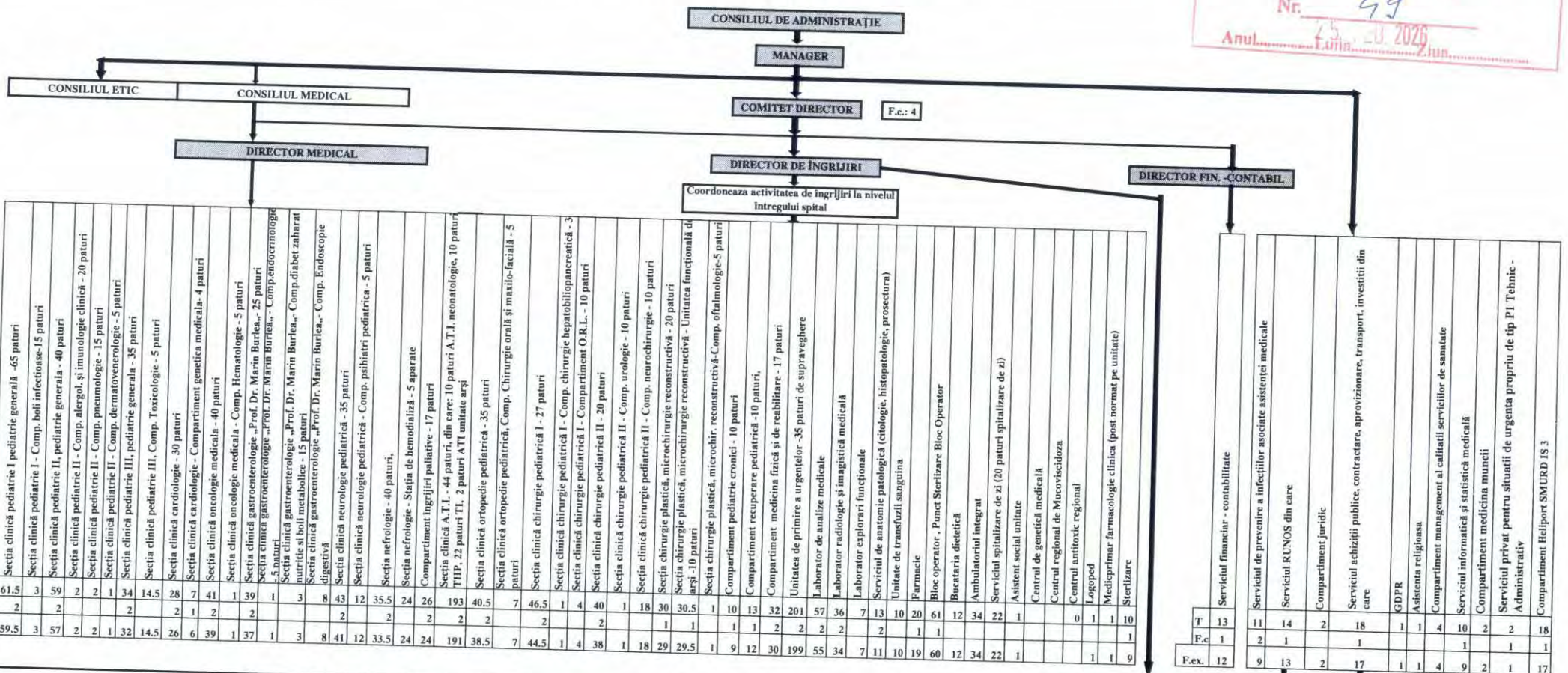
Data astăzi: 25 februarie 2026



Contrasemnează pentru legalitate,
SECRETAR GENERAL AL JUDEȚULUI,
Lăcrămioara Vernică-Dăscălescu

ORGANIGRAMA UNITĂȚII
1 MARTIE 2026

Anexa nr. 1
la Hotărârea Consiliului Județean Iași
din 25.02.2026
nr. 59
Anul 2026
Luna Februarie



CENTRALIZATOR POSTURI NORMATE		
Funcții de conducere	Funcții de execuție	
Comitet director	4	Medic
Șef de secție/labor./serv.	18	Alt personal sanitar cu studii superioare
Farmacist șef	1	Asist. medicali (M,PL,S): reg. med.,statist. med.
Asistent medical șef	18	Personal auxiliar sanitar
Șef serviciu	5	Personal din aparatul funcțional (TESA)
Administrator Helpport	1	Muncitori calificați, bucatari calificați, muncitori necalificați, șoferi
		Medici rezidenți anii I-VII
		Paznici, agenți salvare(pompieri)
Total funcții conducere	47	Total funcții de execuție
TOTAL POSTURI NORMATE UNITATE		1874
Numar paturi = 652 spitalizare continuă, 20 spitalizare de zi, 70 pentru însoțitori		1921

Legendă
F.c. - funcție de conducere
F.ex. - funcție de execuție
T - total

Manager
Diaconu Gheorghe

Bloc alimentar		Sector comun (îngrijit, curățenie)		Spălătorie	
24	44	25			
1					
23	44	25			

Compartment relații cu publicul		Comp. securit. muncii, protecție civilă		Compartment contractare		Compartment aprovizionare		Compartment investiții		Compartment transport	
1	2	T		3	9	3	2				
1	2	F.c.		3	9	3	2				
		F.ex.		3	9	3	2				

Compartment registratură internari, programari pacienți		Compartment tehnic-administrativ	
17		31	24
17		31	24

CONSILIUL JUDEȚEAN IAȘI
SPITALUL CLINIC DE URGENȚĂ PENTRU COPII "SF. MARIA" IAȘI

STAT DE FUNCȚII
1 MARTIE 2026



Nr. crt.	STRUCTURA	Funcția contractuală		Specialitatea	Grad/Treapta profesională	Nivelul studiilor	Norma/post	Observatii
		de conducere	de executie					
0	1	2	3	4	5	6	7	8
1	Manager	conducere		Medicala	grad II	S	1	
2	Director medical	conducere		Medic primar	grad II	S	1	
3	Director financiar-conta	conducere		Economist IA	grad II	S	1	
4	Director de îngrijiri	conducere		Asistent medical principal	grad II	S	1	
	COMITET DIRECTOR						4	
5	Medic Sef sectie	conducere		Pediatrie	grad II	S	1	
6	Medic		executie	Pediatrie	Primar	S	1	
7	Medic		executie	Pediatrie	Primar	S	1	
8	Medic		executie	Pediatrie	Primar	S	1	
9	Medic		executie	Pediatrie	Primar	S	1	
10	Medic		executie	Pediatrie	Primar	S	1	
11	Medic		executie	Pediatrie	Primar	S	1	
12	Medic		executie	Pediatrie	Primar	S	0.5	
13	Medic		executie	Pediatrie	Primar	S	0.5	
14	Medic		executie	Pediatrie	Primar	S	0.5	
15	Asistent Medical Sef	conducere		Generală	Principal	PL	1	
16	Asistent Medical		executie	Generală	Principal	S	1	
17	Asistent Medical		executie	Generală	Principal	S	1	
18	Asistent Medical		executie	Generală	Principal	PL	1	
19	Asistent Medical		executie	Generală	Principal	P L	1	
20	Asistent Medical		executie	Generală	Principal	P L	1	
21	Asistent Medical		executie	Generală	Principal	P L	1	

22	Asistent Medical		executie	Generala	Principal	PL	1
23	Asistent Medical		executie	Generala	Principal	PL	1
24	Asistent Medical		executie	Generala	Principal	PL	1
25	Asistent Medical		executie	Generala	Principal	PL	1
26	Asistent Medical		executie	Generala	Principal	PL	1
27	Asistent Medical		executie	Generala	Principal	PL	1
28	Asistent Medical		executie	Pediatrie	Principal	PL	1
29	Asistent Medical		executie	Pediatrie	Principal	PL	1
30	Asistent Medical		executie	Pediatrie	Principal	PL	1
31	Asistent Medical		executie	Pediatrie	Principal	PL	1
32	Asistent Medical		executie	Pediatrie	Principal	PL	1
33	Asistent Medical		executie	Generala	Principal	PL	1
34	Asistent Medical		executie	Generala	Principal	PL	1
35	Asistent Medical		executie	Generala	Principal	PL	1
36	Asistent Medical		executie	Generala	Principal	PL	1
37	Asistent Medical		executie	Generala	Principal	PL	1
38	Asistent Medical		executie	Generala		PL	1
39	Asistent Medical		executie	Generala		PL	1
40	Asistent Medical		executie	Generala		PL	1
41	Asistent Medical		executie	Generala		PL	1
42	Asistent Medical		executie	Generala		PL	1
43	Asistent Medical		executie	Generala		PL	1
44	Asistent Medical		executie	Generala		PL	1
45	Asistent Medical		executie	Generala		PL	1
46	Registrator medical		executie		Principal	M	1
47	Infirmiera		executie			G	1
48	Infirmiera		executie			G	1
49	Infirmiera		executie			G	1
50	Infirmiera		executie			G	1
51	Infirmiera		executie			G	1
52	Infirmiera		executie			G	1
53	Infirmiera		executie			G	1
54	Infirmiera		executie			G	1

JUDEȚUL IAȘI
CONSILIUL JUDEȚEAN IAȘI
Anexă la Hotărârea

Nr. 25 / FEB. 2026

Anul Luna Ziua

55	Infirmiera		executie			G	1
56	Infirmiera		executie			G	1
57	Infirmiera		executie			G	1
58	Infirmiera		executie			G	1
59	Ingrijitoare		executie			G	1
60	Ingrijitoare		executie			G	1
61	Ingrijitoare		executie			G	1
62	Ingrijitoare		executie			G	1
63	Ingrijitoare		executie			G	1
64	Ingrijitoare		executie			G	1
65	Ingrijitoare		executie			G	1
66	Ingrijitoare		executie			G	1
67	Ingrijitoare		executie			G	1
SECȚIA CLINICĂ PEDIATRIE I - 65 paturi							61.5
68	Medic		executie	Pediatric	Primar	S	1
69	Medic		executie	Pediatric	Primar	S	1
70	Medic		executie	Boli infectioase	Specialist	S	1
SECȚIA CLINICĂ PEDIATRIE I - Compartiment boli infecțioase - 15 paturi							3
71	Medic Sef sectie	conducere		Cardiologie pediatrica	grad I	S	1
72	Medic		executie	Pediatric/ Cardiologie pediatrică	Primar	S	1
73	Medic		executie	Cardiologie pediatrica	Specialist	S	1
74	Medic		executie	Cardiologie pediatrica	Specialist	S	1
75	Asistent Medical Sef	conducere		Pediatric	Principal	S	1
76	Asistent Medical		executie	Generală	Principal	S	1
77	Asistent Medical		executie	Generală	Principal	S	1
78	Asistent Medical		executie	Generală	Principal	S	1
79	Asistent Medical		executie	Pediatric	Principal	P L	1
80	Asistent Medical		executie	Pediatric	Principal	P L	1
81	Asistent Medical		executie	Pediatric	Principal	P L	1
82	Asistent Medical		executie	Generală	Principal	P L	1
83	Asistent Medical		executie	Generală	Principal	P L	1
84	Asistent Medical		executie	Generală	Principal	P L	1
85	Asistent Medical		executie	Generală		P L	1



86	Asistent Medical		executie	Generala	Debutant	P L	1		
87	Registrator medical		executie		Principal	M	1		
88	Infirmiera		executie			G	1		
89	Infirmiera		executie			G	1		
90	Infirmiera		executie			G	1		
91	Infirmiera		executie			G	1		
92	Infirmiera		executie			G	1		
93	Infirmiera		executie		Debutant	G	1		
94	Ingrijitoare		executie			G	1		
95	Ingrijitoare		executie			G	1		
96	Ingrijitoare		executie			G	1		
97	Ingrijitoare		executie			G	1		
98	Ingrijitoare		executie			G	1		
	SECȚIA CLINICĂ CARDIOLOGIE - 30 paturi							28	
99	Medic coordonator		executie	Genetica medicala	Primar	S	0.5		
100	Medic		executie	Genetica medicala	Primar	S	0.5		
101	Medic		executie	Genetica medicala	Primar	S	0.5		
102	Medic		executie	Genetica medicala	Primar	S	0.5		
103	Medic		executie	Genetica medicala	Primar	S	0.5		
104	Medic		executie	Genetica medicala	Specialist	S	0.5		
105	Asistent medical		executie	Generala	principal	PL	1		
106	Asistent medical		executie	Generala		PL	1		
107	Infirmiera		executie			G	1		
108	Ingrijitoare		executie			G	1		
	SECȚIA CLINICĂ CARDIOLOGIE - Compartiment genetica medicală - 4 paturi							7	
109	Medic Sef sectie	conducere		Pediatrie	grad II	S	1		
110	Medic		executie	Pediatrie	Primar	S	1		
111	Medic		executie	Pediatrie	Primar	S	0.5		
112	Medic		executie	Pediatrie	Primar	S	0.5		
113	Medic		executie	Pediatrie	Primar	S	0.5		
114	Medic		executie	Pediatrie	Primar	S	0.5		
115	Medic		executie	Pediatrie	Primar	S	0.5		
116	Medic		executie	Pediatrie	Primar	S	0.5		



117	Medic		executie	Pediatrie	Primar	S	0.5
118	Medic		executie	Pediatrie	Primar	S	0.5
119	Asistent Medical Sef	conducere		Generala	Principal	S	1
120	Asistent Medical		executie	Pediatrie	Principal	S	1
121	Asistent Medical		executie	Pediatrie	Principal	S	1
122	Asistent Medical		executie	Pediatrie	Principal	S	1
123	Asistent Medical		executie	Pediatrie	Principal	S	1
124	Asistent Medical		executie	Generala	Principal	S	1
125	Asistent Medical		executie	Generala	Principal	S	1
126	Asistent Medical		executie	Generala	Principal	S	1
127	Asistent Medical		executie	Pediatrie	Principal	PL	1
128	Asistent Medical		executie	Pediatrie	Principal	PL	1
129	Asistent Medical		executie	Pediatrie	Principal	PL	1
130	Asistent Medical		executie	Pediatrie	Principal	PL	1
131	Asistent Medical		executie	Pediatrie	Principal	PL	1
132	Asistent Medical		executie	Pediatrie	Principal	PL	1
133	Asistent Medical		executie	Pediatrie	Principal	PL	1
134	Asistent Medical		executie	Pediatrie	Principal	PL	1
135	Asistent Medical		executie	Pediatrie	Principal	PL	1
136	Asistent Medical		executie	Generala	Principal	PL	1
137	Asistent Medical		executie	Generala	Principal	PL	1
138	Asistent Medical		executie	Generala	Principal	PL	1
139	Asistent Medical		executie	Generala	Principal	PL	1
140	Asistent Medical		executie	Generala	Principal	PL	1
141	Asistent Medical		executie	Generala	Principal	PL	1
142	Asistent Medical		executie	Generala		PL	1
143	Asistent Medical		executie	Generala		PL	1
144	Asistent Medical		executie	Generala		PL	1
145	Asistent Medical		executie	Generala		PL	1
146	Asistent Medical		executie	Generala		PL	1
147	Asistent Medical		executie	Generala	Debutant	PL	1
148	Asistent Medical		executie	Generala	Debutant	PL	1
149	Sora medicala		executie	Pediatrie	Principal	M	1



150	Registrator medical		executie		Principal	M	1
151	Infirmiera		executie			G	1
152	Infirmiera		executie			G	1
153	Infirmiera		executie			G	1
154	Infirmiera		executie			G	1
155	Infirmiera		executie			G	1
156	Infirmiera		executie			G	1
157	Infirmiera		executie			G	1
158	Infirmiera		executie			G	1
159	Infirmiera		executie			G	1
160	Infirmiera		executie			G	1
161	Infirmiera		executie		Debutant	G	1
162	Ingrijitoare		executie			G	1
163	Ingrijitoare		executie			G	1
164	Ingrijitoare		executie			G	1
165	Ingrijitoare		executie			G	1
166	Ingrijitoare		executie			G	1
167	Ingrijitoare		executie			G	1
168	Ingrijitoare		executie			G	1
169	Ingrijitoare		executie			G	1
170	Ingrijitoare		executie			G	1
171	Ingrijitoare		executie			G	1
	SECȚIA CLINICĂ PEDIATRIE II - 40 paturi						59
172	Medic		executie	Alergologie si imunologie clinica	Primar	S	1
173	Medic		executie	Alergologie si imunologie clinica	Specialist	S	1
	SECȚIA CLINICĂ PEDIATRIE II - COMPARTIMENT ALERGOLOGIE ȘI IMUNOLOGIE CLINICĂ						2
174	Medic		executie	Pneumologie pediatria	Specialist	S	1
175	Medic		executie	Pneumologie pediatria	Specialist	S	1
	SECȚIA CLINICĂ PEDIATRIE II - COMPARTIMENT PNEUMOLOGIE - 15 paturi						2
176	Medic		executie	Dermatovenerologie	Primar	S	1
	SECȚIA CLINICĂ PEDIATRIE II - Comp. dermatovenerologie - 5 paturi						1
177	Medic Sef sectie	conducere		Pediatrie	grad II	S	1
178	Medic		executie	Pediatrie	Primar	S	1



179	Medic		executie	Pediatrie	Primar	S	1	
180	Medic		executie	Pediatrie	Primar	S	1	
181	Medic		executie	Pediatrie	Primar	S	1	
182	Medic		executie	Pediatrie	Specialist	S	1	
183	Medic		executie	Pediatrie	Primar	S	0.5	
184	Medic		executie	Pediatrie	Primar	S	0.5	
185	Medic		executie	Pediatrie	Primar	S	0.5	
186	Medic		executie	Pediatrie	Primar	S	0.5	
187	Asistent Medical Sef	conducere		Pediatrie	Principal	PL	1	
188	Asistent Medical		executie	Generala	Principal	S	1	
189	Asistent Medical		executie	Generala	Principal	S	1	
190	Asistent Medical		executie	Pediatrie	Principal	S	1	
191	Asistent Medical		executie	Generala	Principal	PL	1	
192	Asistent Medical		executie	Pediatrie	Principal	PL	1	
193	Asistent Medical		executie	Generala	Principal	PL	1	
194	Asistent Medical		executie	Generala	Principal	P L	1	
195	Asistent Medical		executie	Generala	Principal	P L	1	
196	Asistent Medical		executie	Generala	Principal	P L	1	
197	Asistent Medical		executie	Pediatrie	Principal	P L	1	
198	Asistent Medical		executie	Generala	Principal	PL	1	
199	Asistent Medical		executie	Generala		P L	1	
200	Asistent Medical		executie	Generala	Debutant	P L	1	
201	Registrator medical		executie		Principal	M	1	
202	Infirmiera		executie			G	1	
203	Infirmiera		executie			G	1	
204	Infirmiera		executie			G	1	
205	Infirmiera		executie			G	1	
206	Infirmiera		executie			G	1	
207	Ingrijitoare		executie			G	1	
208	Ingrijitoare		executie			G	1	
209	Ingrijitoare		executie			G	1	
210	Ingrijitoare		executie			G	1	
211	Ingrijitoare		executie			G	1	

JUDETUL IASI
 CONSILIUL JUDETEAN IASI
 Anexă la Hotărârea

Nr.

25

FEB. 2025

Amplasat în Anexa nr. 1 din Hotărârea nr. 25 din 25 FEB. 2025

212	Ingrijitoare		executie			G	1
SECȚIA CLINICĂ PEDIATRIE III - 35 paturi							34
213	Medic		executie	Pediatrie	Primar	S	1
214	Medic cu 0.5 normă		executie	Pediatrie	Primar	S	0.5
215	Psiholog		executie	Psihologie	Principal	S	1
216	Asistent Medical		executie	Generala	Principal	P L	1
217	Asistent Medical		executie	Generala	Principal	P L	1
218	Asistent Medical		executie	Generala	Principal	P L	1
219	Asistent Medical		executie	Generala	Principal	P L	1
220	Asistent Medical		executie	Generala	Principal	P L	1
221	Asistent Medical		executie	Generala	Principal	P L	1
222	Infirmiera		executie			G	1
223	Infirmiera		executie			G	1
224	Infirmiera		executie			G	1
225	Infirmiera		executie			G	1
226	Infirmiera		executie		Debutant	G	1
227	Ingrijitoare		executie			G	1
SECȚIA CLINICĂ PEDIATRIE III - Compartiment toxicologie - 5 paturi							14.5
228	Medic Sef sectie	conducere		Neurologie pediatria	grad II	S	1
229	Medic		executie	Neurologie pediatria	Primar	S	1
230	Medic		executie	Neurologie pediatria	Specialist	S	1
231	Medic		executie	Neurologie pediatria	Specialist	S	1
232	Asistent Medical Sef	conducere		Generala	Principal	S	1
233	Asistent Medical		executie	Generala	Principal	P L	1
234	Asistent Medical		executie	Generala	Principal	P L	1
235	Asistent Medical		executie	Generala	Principal	P L	1
236	Asistent Medical		executie	Generala	Principal	P L	1
237	Asistent Medical		executie	Generala	Principal	P L	1
238	Asistent Medical		executie	Generala	Principal	P L	1
239	Asistent Medical		executie	Pediatrie	Principal	P L	1
240	Asistent Medical		executie	Pediatrie	Principal	P L	1
241	Asistent Medical		executie	Pediatrie	Principal	P L	1
242	Asistent Medical		executie	Pediatrie	Principal	P L	1

JUDEȚUL IAȘI
CONSILIUL JUDEȚEAN IAȘI
 Anexă la Hotărârea
 Nr. 19
 Anul 2025 FEB 2025

243	Asistent Medical		executie	Pediatrică	Principal	P L	1
244	Asistent Medical		executie	Generală	Principal	P L	1
245	Asistent Medical		executie	Generală	Principal	P L	1
246	Asistent Medical		executie	Generală		P L	1
247	Asistent Medical		executie	Generală	Debutant	P L	1
248	Asistent Medical		executie	Generală	Debutant	P L	1
249	Asistent Medical		executie	Generală	Debutant	P L	1
250	Registrator medical		executie		Principal	M	1
251	Infirmiera		executie			G	1
252	Infirmiera		executie			G	1
253	Infirmiera		executie			G	1
254	Infirmiera		executie			G	1
255	Infirmiera		executie			G	1
256	Infirmiera		executie			G	1
257	Infirmiera		executie			G	1
258	Infirmiera		executie			G	1
259	Infirmiera		executie			G	1
260	Infirmiera		executie			G	1
261	Infirmiera		executie			G	1
262	Infirmiera		executie			G	1
263	Infirmiera		executie		Debutant	G	1
264	Infirmiera		executie		Debutant	G	1
265	Infirmiera		executie		Debutant	G	1
266	Ingrijitoare		executie			G	1
267	Ingrijitoare		executie			G	1
268	Ingrijitoare		executie			G	1
269	Ingrijitoare		executie			G	1
270	Ingrijitoare		executie			G	1
SECȚIA CLINICĂ NEUROLOGIE PEDIATRICĂ - 35 paturi							43
271	Medic		executie	Psihiatrie pediatrică	Specialist	S	1
272	Medic		executie	Psihiatrie pediatrică	Specialist	S	1
273	Psiholog		executie	psihologie	Stagiar	S	1
274	Asistent medical		executie	Generală	Debutant	S	1

JUDEȚUL IAȘI
 CONSILIUL JUDEȚEAN IAȘI
 Anexă la Hotărârea

Nr. 49

25 FEB 2024

Ampl. 2024

275	Asistent medical		executie	Generala	Debutant	S	1
276	Asistent medical		executie	Generala	Debutant	PL	1
277	Asistent medical		executie	Generala	Debutant	PL	1
278	Infirmiera		executie			G	1
279	Infirmiera		executie			G	1
280	Infirmiera		executie			G	1
281	Infirmiera		executie			G	1
282	Ingrijitoare		executie			G	1
	SECȚIA CLINICĂ NEUROLOGIE PEDIATRICĂ - Comp. Psihiatrie pediatrică - 5 paturi						12
283	Medic Sef sectie	conducere		Pediatrie/Nefrologie pediatrica	grad I	S	1
284	Medic		executie	Pediatrie	Primar	S	0.5
285	Medic		executie	Pediatrie/Nefrologie	Primar	S	1
286	Medic		executie	Pediatrie/Nefrologie pediatrica	Primar	S	1
287	Medic		executie	Nefrologie pediatrica	Specialist	S	1
288	Asistent Medical Sef	conducere		Pediatrie	Principal	S	1
289	Asistent Medical		executie	Generala	Principal	S	1
290	Asistent Medical		executie	Generala	Principal	S	1
291	Asistent Medical		executie	Generala	Principal	S	1
292	Asistent Medical		executie	Generala	Principal	S	1
293	Asistent Medical		executie	Generala	Debutant	S	1
294	Asistent Medical		executie	Generala	Principal	P L	1
295	Asistent Medical		executie	Generala	Principal	P L	1
296	Asistent Medical		executie	Generala	Principal	P L	1
297	Asistent Medical		executie	Generala	Principal	P L	1
298	Asistent Medical		executie	Generala	Principal	P L	1
299	Asistent Medical		executie	Generala	Principal	P L	1
300	Asistent Medical		executie	Pediatrie	Principal	P L	1
302	Asistent Medical		executie	Pediatrie	Principal	P L	1
301	Asistent Medical		executie	Generala	Principal	PL	1
303	Asistent Medical		executie	Generala		P L	1
304	Asistent Medical		executie	Generala	Debutant	P L	1
305	Asistent Medical		executie	Generala	Debutant	P L	1
306	Registrator medical		executie		Principal	M	1



307	Infirmiera		executie			G	1
308	Infirmiera		executie			G	1
309	Infirmiera		executie			G	1
310	Infirmiera		executie			G	1
311	Infirmiera		executie			G	1
312	Infirmiera		executie			G	1
313	Infirmiera		executie			G	1
314	Ingrijitoare		executie			G	1
315	Ingrijitoare		executie			G	1
316	Ingrijitoare		executie			G	1
317	Ingrijitoare		executie			G	1
318	Ingrijitoare		executie			G	1
	SECȚIA NEFROLOGIE - 40 paturi						35.5
319	Medic		executie	Pediatrie/Nefrologie pediatria	Primar	S	0.5
320	Medic		executie	Pediatrie/Nefrologie pediatria	Primar	S	0.25
321	Medic		executie	Pediatrie/Nefrologie pediatria	Primar	S	0.25
322	Medic				Specialist/R ezident ultim an	S	1
323	Psiholog		executie		specialist	S	1
324	Asistent medical	conducere		Generala	Principal	PL	1
325	Asistent medical		executie		Principal	S	1
326	Asistent medical		executie		Principal	S	1
327	Asistent medical		executie		Principal	PL	1
328	Asistent medical		executie		Principal	PL	1
329	Asistent medical		executie		Principal	PL	1
330	Asistent medical		executie			PL	1
331	Asistent medical		executie		Debutant	PL	1
332	Asistent medical		executie			S	1
333	Asistent medical		executie			S	1
334	Asistent medical		executie			PL	1
335	Asistent medical		executie			PL	1
336	Registrator medical		executie			M	1
337	Infirmiera		executie			G	1



338	Infirmiera		executie			G	1	
339	Infirmiera		executie			G	1	
340	Infirmiera		executie			G	1	
341	Ingrijitoare		executie			G	1	
342	Ingrijitoare		executie			G	1	
343	Ingrijitoare		executie			G	1	
344	Ingrijitoare		executie			G	1	
	SECȚIA NEFROLOGIE - Stația de hemodializă (5 aparate)							24
345	Medic Sef sectie	conducere		Oncologie și hematologie pediatrică	grad II	S	1	
346	Medic		executie	Pediatrie	Primar	S	1	
347	Medic		executie	Pediatrie	Primar	S	1	
348	Medic		executie	Pediatrie	Primar	S	0.5	
349	Medic		executie	Pediatrie	Primar	S	0.5	
350	Medic		executie	Oncologie și hematologie pediatrică	Specialist	S	1	
351	Psiholog		executie	Psihologie	Practicant	S	1	
352	Asistent Medical Sef	conducere		Pediatrie	Principal	P L	1	
353	Asistent Medical		executie	Generala	Principal	S	1	
354	Asistent Medical		executie	Generala	Principal	S	1	
355	Asistent Medical		executie	Generala	Principal	S	1	
356	Asistent Medical		executie	Generala	Principal	S	1	
357	Asistent Medical		executie	Pediatrie	Principal	S	1	
358	Asistent Medical		executie	Pediatrie	Principal	S	1	
359	Asistent Medical		executie	Generala	Principal	P L	1	
360	Asistent Medical		executie	Generala	Principal	P L	1	
361	Asistent Medical		executie	Generala	Principal	P L	1	
362	Asistent Medical		executie	Generala	Principal	P L	1	
363	Asistent Medical		executie	Generala	Principal	P L	1	
364	Asistent Medical		executie	Generala	Principal	P L	1	
365	Asistent Medical		executie	Generala	Principal	P L	1	
366	Asistent Medical		executie	Pediatrie	Principal	P L	1	
367	Asistent Medical		executie	Pediatrie	Principal	P L	1	
368	Asistent Medical		executie	Generala		P L	1	
369	Asistent Medical		executie	Generala		P L	1	



370	Tehnician de farmacie		executie		Principal	S	1
371	Tehnician de farmacie		executie		Principal	S	1
372	Registrator medical		executie		Principal	M	1
373	Infirmiera		executie			G	1
374	Infirmiera		executie			G	1
375	Infirmiera		executie			G	1
376	Infirmiera		executie			G	1
377	Infirmiera		executie			G	1
378	Infirmiera		executie			G	1
379	Infirmiera		executie			G	1
380	Infirmiera		executie		Debutant	G	1
381	Ingrijitoare		executie			G	1
382	Ingrijitoare		executie			G	1
383	Ingrijitoare		executie			G	1
384	Ingrijitoare		executie			G	1
385	Ingrijitoare		executie			G	1
386	Ingrijitoare		executie			G	1
	SECȚIA CLINICĂ ONCOLOGIE MEDICALĂ - 40 paturi						41
387	Medic		executie	Hematologie	Primar	S	1
	SECȚIA CLINICĂ ONCOLOGIE MEDICALĂ - Compartiment hematologie - 5 paturi						1
388	Medic coordonator		executie	Pediatrie	Primar	S	1
389	Medic		executie	Pediatrie	Specialist	S	1
390	Asistent Medical coordonator		executie	Generala	Principal	P L	1
391	Asistent Medical		executie	Generala	Principal	P L	1
392	Asistent Medical		executie	Generala	Principal	P L	1
393	Asistent Medical		executie	Generala	Principal	P L	1
394	Asistent Medical		executie	Generala	Principal	P L	1
395	Asistent Medical		executie	Generala	Principal	P L	1
396	Asistent Medical		executie	Generala		P L	1
397	Asistent Medical		executie	Generala	Principal	S	1
398	Asistent Medical		executie	Generala	Debutant	P L	1
399	Asistent Medical		executie	Pediatrie	Debutant	P L	1
400	Registrator medical		executie		Principal	M	1



401	Infirmiera		executie			G	1	
402	Infirmiera		executie			G	1	
403	Infirmiera		executie			G	1	
404	Infirmiera		executie			G	1	
405	Infirmiera		executie			G	1	
406	Infirmiera		executie			G	1	
407	Infirmiera		executie			G	1	
408	Infirmiera		executie			G	1	
409	Infirmiera		executie		Debutant	G	1	
410	Infirmiera		executie		Debutant	G	1	
411	Ingrijitoare		executie			G	1	
412	Ingrijitoare		executie			G	1	
413	Ingrijitoare		executie			G	1	
	COMPARTIMENT ÎNGRIJIRI PALIATIVE - 17 paturi							26
414	Medic Sef sectie	conducere		Gastroenterologie pediatria	grad I	S	1	
415	Medic		executie	Gastroenterologie pediatria	Primar	S	1	
416	Medic		executie	Gastroenterologie pediatria	Primar	S	0.5	
417	Medic		executie	Gastroenterologie pediatria	Primar	S	0.5	
418	Medic		executie	Pediatrie	Primar	S	0.5	
419	Medic		executie	Pediatrie	Primar	S	0.5	
420	Asistent Medical Sef	conducere		Pediatrie	Principal	S	1	
421	Asistent Medical		executie	Pediatrie	Principal	S	1	
422	Asistent Medical		executie	Pediatrie	Principal	S	1	
423	Asistent Medical		executie	Pediatrie	Principal	S	1	
424	Asistent Medical		executie	Pediatrie	Principal	S	1	
425	Asistent Medical		executie	Pediatrie	Principal	S	1	
426	Asistent Medical		executie	Generala	Principal	S	1	
427	Asistent Medical		executie	Generala	Principal	S	1	
428	Asistent Medical		executie	Generala	Principal	P L	1	
429	Asistent Medical		executie	Generala	Principal	P L	1	
430	Asistent Medical		executie	Generala	Principal	P L	1	
431	Asistent Medical		executie	Generala	Principal	P L	1	
432	Asistent Medical		executie	Pediatrie	Principal	P L	1	



433	Asistent Medical		executie	Generala	Principal	P L	1
434	Asistent Medical		executie	Generala	Principal	P L	1
435	Asistent Medical		executie	Generala	Principal	P L	1
436	Asistent Medical		executie	Generala	Principal	P L	1
437	Asistent Medical		executie	Generala	Principal	P L	1
438	Asistent Medical		executie	Generala	Principal	P L	1
439	Asistent Medical		executie	Generala		P L	1
440	Registrator medical		executie		Principal	M	1
441	Infirmiera		executie			G	1
442	Infirmiera		executie			G	1
443	Infirmiera		executie			G	1
444	Infirmiera		executie			G	1
445	Infirmiera		executie			G	1
446	Infirmiera		executie			G	1
447	Infirmiera		executie			G	1
448	Infirmiera		executie			G	1
449	Ingrijitoare		executie			G	1
450	Ingrijitoare		executie			G	1
451	Ingrijitoare		executie			G	1
452	Ingrijitoare		executie			G	1
453	Ingrijitoare		executie			G	1
454	Ingrijitoare		executie			G	1
	SECȚIA CLINICĂ GASTROENTEROLOGIE „Prof. Dr. Marin Burlea,, - 25 paturi						39
455	Medic		executie	Pediatrie	Primar	S	1
456	Medic		executie	Pediatrie	Primar	S	1
457	Medic		executie	Pediatrie	Primar	S	0.5
458	Medic		executie	Pediatrie	Specialist	S	0.5
	SECȚIA CLINICĂ GASTROENTEROLOGIE „Prof. Dr. Marin Burlea,, - Comp. diabet zaharat, nutriție						3
459	Medic		executie	Endocrinologie	Primar	S	1
	SECȚIA CLINICĂ GASTROENTEROLOGIE „Prof. Dr. Marin Burlea,, - Comp. endocrinologie - 5 patur						1
460	Asistent Medical coordonator		executie	Pediatrie	Principal	S	1
461	Asistent Medical		executie	Generala	Principal	S	1
462	Asistent Medical		executie	Generala	Principal	S	1



463	Asistent Medical		executie	Generala	Principal	S	1
464	Asistent Medical		executie	Generala	Principal	S	1
465	Asistent Medical		executie	Generala	Principal	PL	1
466	Asistent Medical		executie	Generala	Principal	PL	1
467	Ingrijitoare		executie			G	1
SECȚIA CLINICĂ GASTROENTEROLOGIE „Prof. Dr. Marin Burlea,- Comp. endoscopie digestivă -							8
468	Medic Sef sectie	conducere		A.T.I.	grad II	S	1
469	Medic		executie	A.T.I.	Primar	S	1
470	Medic		executie	A.T.I.	Primar	S	1
471	Medic		executie	A.T.I.	Primar	S	1
472	Medic		executie	A.T.I.	Primar	S	1
473	Medic		executie	A.T.I.	Primar	S	1
474	Medic		executie	A.T.I.	Primar	S	1
475	Medic		executie	A.T.I.	Primar	S	1
476	Medic		executie	A.T.I.	Primar	S	1
477	Medic		executie	A.T.I.	Primar	S	1
478	Medic		executie	A.T.I.	Primar	S	1
479	Medic		executie	A.T.I.	Primar	S	1
480	Medic		executie	Neonatologie	Primar	S	1
481	Medic		executie	A.T.I.	Specialist	S	1
482	Medic		executie	A.T.I.	Specialist	S	1
483	Medic		executie	A.T.I.	Specialist	S	1
484	Medic		executie	A.T.I.	Specialist	S	1
485	Medic		executie	A.T.I.	Specialist	S	1
486	Medic		executie	A.T.I.	Specialist	S	1
487	Medic		executie	A.T.I.	Specialist	S	1
488	Medic		executie	A.T.I.	Specialist	S	1
489	Medic		executie	Neonatologie	Specialist	S	1
490	Medic		executie	Epidemiologie	Specialist	S	1
491	Medic		executie	Boli infectioase	Specialist	S	1
492	Medic		executie	A.T.I.	Rezident ulti	S	1
493	Medic		executie	A.T.I.	Rezident ulti	S	1
494	Psiholog		executie	Psihologie	Practicant	S	1



495	Bioinginer medical		executie	Bioinformatica si management sanitar	Principal	S	1
496	Bioinginer medical		executie	Substante bioactive si biotehnologie med	Principal	S	1
497	Fiziokinetoterapeut		executie	Fiziokinetoterapie	Debutant	S	1
498	Fiziokinetoterapeut		executie	Balneo-fiziokinetoterapie și recuperare	Principal	S	1
499	Asistent Medical Sef	conducere		Generala	Principal	PL/S	1
500	Asistent Medical		executie	Generala	Principal	S	1
501	Asistent Medical		executie	Generala	Principal	S	1
502	Asistent Medical		executie	Generala	Principal	S	1
503	Asistent Medical		executie	Generala	Principal	S	1
504	Asistent Medical		executie	Generala	Principal	S	1
505	Asistent Medical		executie	Generala	Principal	S	1
506	Asistent Medical		executie	Pediatricie	Principal	S	1
507	Asistent Medical		executie	Generala	Principal	S	1
508	Asistent Medical		executie	Generala	Principal	S	1
509	Asistent Medical		executie	Generala	Principal	S	1
510	Asistent Medical		executie	Generala	Principal	S	1
511	Asistent Medical		executie	Generala	Principal	S	1
512	Asistent Medical		executie	Generala	Principal	S	1
513	Asistent Medical		executie	Generala	Principal	S	1
514	Asistent Medical		executie	Generala	Principal	S	1
515	Asistent Medical		executie	Generala	Principal	S	1
516	Asistent Medical		executie	Generala	Principal	S	1
517	Asistent Medical		executie	Generala	Principal	S	1
518	Asistent Medical		executie	Generala	Principal	S	1
519	Asistent Medical		executie	Generala	Principal	S	1
520	Asistent Medical		executie	Generala	Principal	S	1
521	Asistent Medical		executie	Generala	Principal	S	1
522	Asistent Medical		executie	Generala	Principal	S	1
523	Asistent Medical		executie	Generala	Principal	S	1
524	Asistent Medical		executie	Generala	Principal	S	1
525	Asistent Medical		executie	Generala	Principal	S	1
526	Asistent Medical		executie	Generala	Principal	S	1
527	Asistent Medical		executie	Generala	Principal	S	1



528	Asistent Medical		executie	Pediatrie	Principal	S	1
529	Asistent Medical		executie	Generala	Principal	S	1
530	Asistent Medical		executie	Generala	Principal	S	1
531	Asistent Medical		executie	Generala	Principal	S	1
532	Asistent Medical		executie	Pediatrie	Principal	S	1
533	Asistent Medical		executie	Generala	Principal	S	1
534	Asistent Medical		executie	Pediatrie	Principal	S	1
535	Asistent Medical		executie	Generala	Principal	S	1
536	Asistent Medical		executie	Pediatrie	Principal	S	1
537	Asistent Medical		executie	Pediatrie	Principal	S	1
538	Asistent Medical		executie	Pediatrie	Principal	S	1
539	Asistent Medical		executie	Generala	Principal	S	1
540	Asistent Medical		executie	Generala	Principal	S	1
541	Asistent Medical		executie	Generala	Principal	S	1
542	Asistent Medical		executie	Generala	Principal	S	1
543	Asistent Medical		executie	Generala	Principal	S	1
544	Asistent Medical		executie	Pediatrie	Principal	S	1
545	Asistent Medical		executie	Generala	Principal	S	1
546	Asistent Medical		executie	Pediatrie	Principal	P L	1
547	Asistent Medical		executie	Pediatrie	Principal	P L	1
548	Asistent Medical		executie	Pediatrie	Principal	P L	1
549	Asistent Medical		executie	Pediatrie	Principal	P L	1
550	Asistent Medical		executie	Pediatrie	Principal	P L	1
551	Asistent Medical		executie	Pediatrie	Principal	P L	1
552	Asistent Medical		executie	Pediatrie	Principal	P L	1
553	Asistent Medical		executie	Pediatrie	Principal	P L	1
554	Asistent Medical		executie	Pediatrie	Principal	P L	1
555	Asistent Medical		executie	Generala	Principal	P L	1
556	Asistent Medical		executie	Generala	Principal	P L	1
557	Asistent Medical		executie	Generala	Principal	P L	1
558	Asistent Medical		executie	Generala	Principal	P L	1
559	Asistent Medical		executie	Generala	Principal	P L	1
560	Asistent Medical		executie	Generala	Principal	P L	1



561	Asistent Medical		executie	Generala	Principal	P L	1	
562	Asistent Medical		executie	Generala	Principal	P L	1	
563	Asistent Medical		executie	Generala	Principal	P L	1	
564	Asistent Medical		executie	Generala	Principal	P L	1	
565	Asistent Medical		executie	Generala	Principal	P L	1	
566	Asistent Medical		executie	Generala	Principal	P L	1	
567	Asistent Medical		executie	Generala	Principal	P L	1	
568	Asistent Medical		executie	Generala	Principal	P L	1	
569	Asistent Medical		executie	Pediatrie	Principal	P L	1	
570	Asistent Medical		executie	Pediatrie	Principal	P L	1	
571	Asistent Medical		executie	Pediatrie	Principal	P L	1	
572	Asistent Medical		executie	Generala		S	1	
573	Asistent Medical		executie	Generala		S	1	
574	Asistent Medical		executie	Generala		S	1	
575	Asistent Medical		executie	Generala		S	1	
576	Asistent Medical		executie	Generala		S	1	
577	Asistent Medical		executie	Generala		S	1	
578	Asistent Medical		executie	Generala		S	1	
579	Asistent Medical		executie	Generala		S	1	
580	Asistent Medical		executie	Generala		S	1	
581	Asistent Medical		executie	Generala		S	1	
582	Asistent Medical		executie	Generala		S	1	
583	Asistent Medical		executie	Generala		P L	1	
584	Asistent Medical		executie	Generala		P L	1	
585	Asistent Medical		executie	Generala		P L	1	
586	Asistent Medical		executie	Generala		P L	1	
587	Asistent Medical		executie	Generala		P L	1	
588	Asistent Medical		executie	Generala		P L	1	
589	Asistent Medical		executie	Generala		P L	1	
590	Asistent Medical		executie	Generala		P L	1	
591	Asistent Medical		executie	Generala		P L	1	
592	Asistent Medical		executie	Generala	Debutant	P L	1	
593	Asistent Medical		executie	Generala	Debutant	P L	1	



594	Registrator medical		executie		Principal	M	1
595	Registrator medical		executie		Principal	M	1
596	Infirmiera		executie			G	1
597	Infirmiera		executie			G	1
598	Infirmiera		executie			G	1
599	Infirmiera		executie			G	1
600	Infirmiera		executie			G	1
601	Infirmiera		executie			G	1
602	Infirmiera		executie			G	1
603	Infirmiera		executie			G	1
604	Infirmiera		executie			G	1
605	Infirmiera		executie			G	1
606	Infirmiera		executie			G	1
607	Infirmiera		executie			G	1
608	Infirmiera		executie			G	1
609	Infirmiera		executie			G	1
610	Infirmiera		executie			G	1
611	Infirmiera		executie			G	1
612	Infirmiera		executie			G	1
613	Infirmiera		executie			G	1
614	Infirmiera		executie			G	1
615	Infirmiera		executie			G	1
616	Infirmiera		executie			G	1
617	Infirmiera		executie			G	1
618	Infirmiera		executie			G	1
619	Infirmiera		executie			G	1
620	Infirmiera		executie			G	1
621	Infirmiera		executie			G	1
622	Infirmiera		executie			G	1
623	Infirmiera		executie			G	1
624	Infirmiera		executie			G	1
625	Infirmiera		executie			G	1
626	Infirmiera		executie		Debutant	G	1

JUDEȚUL IAȘI
CONSILIUL JUDEȚEAN IAȘI
Anexă la Hotărârea
Nr. 25 FEB. 2024
Anul / Luna / Anul

627	Infirmiera		executie		Debutant	G	1
628	Infirmiera		executie		Debutant	G	1
629	Infirmiera		executie		Debutant	G	1
630	Infirmiera		executie		Debutant	G	1
631	Infirmiera		executie		Debutant	G	1
632	Infirmiera		executie		Debutant	G	1
633	Infirmiera		executie		Debutant	G	1
634	Infirmiera		executie		Debutant	G	1
635	Infirmiera		executie		Debutant	G	1
636	Infirmiera		executie		Debutant	G	1
637	Infirmiera		executie		Debutant	G	1
638	Infirmiera		executie		Debutant	G	1
639	Infirmiera		executie		Debutant	G	1
640	Infirmiera		executie		Debutant	G	1
641	Infirmiera		executie		Debutant	G	1
642	Infirmiera		executie		Debutant	G	1
643	Infirmiera		executie		Debutant	G	1
644	Infirmiera		executie		Debutant	G	1
645	Ingrijitoare		executie			G	1
646	Ingrijitoare		executie			G	1
647	Ingrijitoare		executie			G	1
648	Ingrijitoare		executie			G	1
649	Ingrijitoare		executie			G	1
650	Ingrijitoare		executie			G	1
651	Ingrijitoare		executie			G	1
652	Ingrijitoare		executie			G	1
653	Ingrijitoare		executie			G	1
654	Brancardier		executie			G	1
655	Brancardier		executie			G	1
656	Brancardier		executie			G	1
657	Brancardier		executie			G	1
658	Brancardier		executie			G	1
659	Brancardier		executie			G	1

JUDEȚUL IAȘI
CONSILIUL JUDEȚEAN IAȘI
Anexă la Hotărârea

Nr. 25, FEB. 2026
Ampl. L. 1000

660	Brancardier		executie			G	1
SECȚIA CLINICĂ A.T.I. - 44 paturi							193
661	Asistent Medical coordonator		executie	Pediatrie	Principal	S	1
662	Asistent Medical		executie	Generala	Principal	S	1
663	Asistent Medical		executie	Generala	Principal	S	1
664	Asistent Medical		executie	Pediatrie	Principal	S	1
665	Asistent Medical		executie	Pediatrie	Principal	S	1
666	Asistent Medical		executie	Pediatrie	Principal	S	1
667	Asistent Medical		executie	Pediatrie	Principal	S	1
668	Asistent Medical		executie	Pediatrie	Principal	S	1
669	Asistent Medical		executie	Pediatrie	Principal	P L	1
670	Ingrijitoare		executie			G	1
UNITATE DE TRANSFUZIE SANGUINĂ							10
671	Medic Sef sectie	conducere		Chirurgie si ortopedie pediatrica	grad II	S	1
672	Medic		executie	Chirurgie si ortopedie pediatrica	Primar	S	1
673	Medic		executie	Chirurgie pediatrica	Primar	S	1
674	Medic		executie	Ortopedie pediatrica	Primar	S	1
675	Medic		executie	Ortopedie pediatrica	Primar	S	1
676	Medic		executie	Ortopedie si traumatologie pediatrica	Primar	S	1
677	Medic		executie	Ortopedie pediatrica	Specialist	S	0.5
678	Asistent Medical Sef	conducere		Generala	Principal	S	1
679	Asistent Medical		executie	Pediatrie	Principal	S	1
680	Asistent Medical		executie	Generala	Principal	S	1
681	Asistent Medical		executie	Generala	Principal	S	1
682	Asistent Medical		executie	Generala	Principal	S	1
683	Asistent Medical		executie	Generala	Principal	S	1
684	Asistent Medical		executie	Generala	Principal	S	1
685	Asistent Medical		executie	Generala	Principal	P L	1
686	Asistent Medical		executie	Generala	Principal	P L	1
687	Asistent Medical		executie	Generala	Principal	P L	1
688	Asistent Medical		executie	Generala	Principal	P L	1
689	Asistent Medical		executie	Generala	Principal	P L	1
690	Asistent Medical		executie	Generala	Principal	P L	1



691	Asistent Medical		executie	Generala	Principal	P L	1
692	Asistent Medical		executie	Generala	Principal	P L	1
693	Registrator medical		executie		Principal	M	1
694	Infirmiera		executie			G	1
695	Infirmiera		executie			G	1
696	Infirmiera		executie			G	1
697	Infirmiera		executie			G	1
698	Infirmiera		executie			G	1
699	Infirmiera		executie			G	1
700	Ingrijitoare		executie			G	1
701	Ingrijitoare		executie			G	1
702	Ingrijitoare		executie			G	1
703	Ingrijitoare		executie			G	1
704	Ingrijitoare		executie			G	1
705	Ingrijitoare		executie			G	1
706	Brancardier		executie			G	1
707	Brancardier		executie			G	1
708	Brancardier		executie			G	1
709	Brancardier		executie			G	1
710	Brancardier		executie			G	1
711	Brancardier		executie			G	1
	SECȚIA CLINICĂ ORTOPEDIE PEDIATRICĂ - 35 paturi						40.5
712	Medic		execuție	Chirurgie orală și maxilo-facială	Specialist	S	1
713	Asistent medical		execuție	Generală		S	1
714	Asistent medical		execuție	Generală		PL	1
715	Asistent medical		execuție	Generală		PL	1
716	Asistent medical		execuție	Generală		PL	1
717	Infirmieră		execuție		Debutant	G	1
718	Ingrijitoare		execuție			G	1
	Sectia Clinică Ortopedie pediatrică- Compartiment chirurgie orală și maxilo facială - 5 paturi						7.0
719	Medic Sef sectie	conducere		Chirurgie pediatrica	grad I	S	0.75
720	Medic		executie	Chirurgie pediatrica	Primar	S	1
721	Medic		executie	Chirurgie pediatrica	Primar	S	0.75



722	Medic		executie	Chirurgie pediatria	Primar	S	0.75
723	Medic		executie	Chirurgie pediatria	Primar	S	0.5
724	Medic		executie	Chirurgie pediatrică	Primar	S	0.25
725	Medic		executie	Chirurgie pediatrică	Primar	S	0.5
726	Asistent Medical Sef	conducere		Generala	Principal	S	1
727	Asistent Medical		executie	Generala	Principal	S	1
728	Asistent Medical		executie	Generala	Principal	S	1
729	Asistent Medical		executie	Generala	Principal	S	1
730	Asistent Medical		executie	Generala	Principal	S	1
731	Asistent Medical		executie	Generala	Principal	S	1
732	Asistent Medical		executie	Generala	Principal	P L	1
733	Asistent Medical		executie	Generala	Principal	P L	1
734	Asistent Medical		executie	Generala	Principal	P L	1
735	Asistent Medical		executie	Generala	Principal	P L	1
736	Asistent Medical		executie	Generala	Principal	P L	1
737	Asistent Medical		executie	Generala	Principal	P L	1
738	Asistent Medical		executie	Generala	Principal	P L	1
739	Asistent Medical		executie	Pediatricie	Principal	P L	1
740	Asistent Medical		executie	Generala		P L	1
741	Asistent Medical		executie	Generala		P L	1
742	Asistent Medical		executie	Generala	Principal	P L	1
743	Asistent medical		executie	Generala	Principal	PL	1
744	Asistent medical		executie	Generala	Principal	PL	1
745	Registrator medical		executie		Principal	M	1
746	Infirmiera		executie			G	1
747	Infirmiera		executie			G	1
748	Infirmiera		executie			G	1
749	Infirmiera		executie			G	1
750	Infirmiera		executie			G	1
751	Infirmiera		executie			G	1
752	Infirmiera		executie			G	1
753	Infirmiera		executie			G	1
754	Infirmiera		executie			G	1



755	Infirmiera		executie			G	1
756	Infirmiera		executie		Debutant	G	1
757	Ingrijitoare		executie			G	1
758	Ingrijitoare		executie			G	1
759	Ingrijitoare		executie			G	1
760	Ingrijitoare		executie			G	1
761	Ingrijitoare		executie			G	1
762	Brancardier		executie			G	1
763	Brancardier		executie			G	1
764	Brancardier		executie			G	1
765	Brancardier		executie			G	1
766	Brancardier		executie			G	1
767	Brancardier		executie			G	1
SECȚIA CLINICĂ CHIRURGIE PEDIATRICĂ I - 27 paturi							46.5
768	Medic		executie	ORL	Primar	S	1
769	Medic		executie	ORL	Primar	S	1
770	Medic		executie	ORL	Primar	S	1
771	Medic		executie	ORL	Primar	S	1
SECȚIA CLINICĂ CHIRURGIE PEDIATRICĂ I - Compartiment O.R.L. - 10 paturi							4
772	Medic		executie	Chirurgie pediatrica	Primar	S	0.25
773	Medic		executie	Chirurgie pediatrica	Primar	S	0.25
774	Medic		executie	Chirurgie pediatrica	Primar	S	0.25
775	Medic		executie	Chirurgie pediatrica	Primar	S	0.25
SECȚIA CLINICĂ CHIRURGIE PEDIATRICĂ I - Compartiment chirurgie hepatobiliopancreatică - 3 p							1
776	Medic Sef sectie	conducere		Chirurgie și ortopedie pediatrică	grad I	S	1
777	Medic		executie	Chirurgie pediatrica	Primar	S	1
778	Medic		executie	Chirurgie pediatrica	Primar	S	1
779	Medic		executie	Chirurgie pediatrica	Primar	S	1
780	Medic		executie	Chirurgie pediatrică /Ortopedie pediatrică	Primar	S	0.5
781	Medic		executie	Chirurgie pediatrică /Ortopedie pediatrică	Primar	S	0.5
782	Asistent Medical Sef	conducere		Pediatrie	Principal	P L	1
783	Asistent Medical		executie	Pediatrie	Principal	S	1
784	Asistent Medical		executie	Generala	Principal	P L	1

JUDEȚUL IAȘI
CONSILIUL JUDEȚEAN IAȘI
Anexă la Hotărârea

Nr. 25, FEB. 2016

Anul

785	Asistent Medical		executie	Pediatrie	Principal	PL	1
786	Asistent Medical		executie	Generala	Principal	PL	1
787	Asistent Medical		executie	Generala	Principal	PL	1
788	Asistent Medical		executie	Generala	Principal	PL	1
789	Asistent Medical		executie	Generala	Principal	PL	1
790	Asistent Medical		executie	Generala	Principal	PL	1
791	Asistent Medical		executie	Generala	Principal	PL	1
792	Asistent Medical		executie	Generala		PL	1
793	Asistent Medical		executie	Generala	Debutant	PL	1
794	Asistent Medical		executie	Generala	Debutant	PL	1
795	Asistent Medical		executie	Generala	Debutant	PL	1
796	Asistent Medical		executie	Pediatrie	Debutant	PL	1
797	Registrator medical		executie		Principal	M	1
798	Infirmiera		executie			G	1
799	Infirmiera		executie			G	1
800	Infirmiera		executie			G	1
801	Infirmiera		executie			G	1
802	Infirmiera		executie			G	1
803	Infirmiera		executie			G	1
804	Infirmiera		executie			G	1
805	Infirmiera		executie			G	1
806	Infirmiera		executie		Debutant	G	1
807	Ingrijitoare		executie			G	1
808	Ingrijitoare		executie			G	1
809	Ingrijitoare		executie			G	1
810	Ingrijitoare		executie			G	1
811	Brancardier		executie			G	1
812	Brancardier		executie			G	1
813	Brancardier		executie			G	1
814	Brancardier		executie			G	1
815	Brancardier		executie			G	1
816	Brancardier		executie			G	1
	SECȚIA CLINICĂ CHIRURGIE PEDIATRICĂ II - 20 paturi						40



817	Medic		executie	Neurochirurgie	Primar	S	1
818	Medic		executie	Neurochirurgie	Primar	S	1
819	Asistent Medical		executie	Generala	Principal	PL	1
820	Asistent Medical		executie	Generala	Principal	PL	1
821	Asistent Medical		executie	Generala	Principal	PL	1
822	Asistent Medical		executie	Generala	Principal	PL	1
823	Asistent Medical		executie	Generala	Principal	PL	1
824	Asistent Medical		executie	Generala	Principal	PL	1
825	Asistent Medical		executie	Generala	Principal	PL	1
826	Asistent Medical		executie	Generala	Principal	PL	1
827	Asistent Medical		executie	Generala	Debutant	PL	1
828	Asistent Medical		executie	Generala	Debutant	PL	1
829	Infirmiera		executie			G	1
830	Infirmiera		executie			G	1
831	Infirmiera		executie			G	1
832	Infirmiera		executie			G	1
833	Infirmiera		executie			G	1
834	Brancardier		executie			G	1
SECȚIA CLINICĂ CHIRURGIE PEDIATRICĂ II - Compartiment neurochirurgie - 10 paturi							18
835	Medic		executie	Chirurgie și ortopedie pediatrică	Primar	S	1
SECȚIA CLINICĂ CHIRURGIE PEDIATRICĂ II - Compartiment urologie - 10 paturi							1
836	Medic Sef sectie	conducere		Chir. plastica si microchir. reconstructiva	grad I	S	1
837	Medic			Chir. plastica si microchir. reconstructiva	Primar	S	1
838	Medic		executie	Chir. plastica si microchir. reconstructiva	Primar	S	0.5
839	Medic		executie	Chir. plastica si microchir. reconstructiva	Primar	S	0.5
840	Medic		executie	Chir. plastica si microchir. reconstructiva	Specialist	S	0.5
841	Medic		executie	Chir. plastica si microchir. reconstructiva	Specialist	S	0.5
842	Asistent Medical		executie	Generala	Principal	S	1
843	Asistent Medical		executie	Generala	Principal	PL	1
844	Asistent Medical		executie	Generala	Principal	PL	1
845	Asistent Medical		executie	Generala	Principal	PL	1
846	Asistent Medical		executie	Pediatrie	Principal	PL	1
847	Asistent Medical		executie	Generala	Principal	PL	1

JUDEȚUL IAȘI
CONSILIUL JUDEȚEAN IAȘI
Anexă la Hotărârea

Nr. 49
25. FEB. 2022
Anul Luna

848	Asistent Medical		executie	Generala	Principal	P L	1	
849	Asistent Medical		executie	Generala	Principal	P L	1	
850	Asistent Medical		executie	Generala	Principal	P L	1	
851	Asistent Medical		executie	Generala	Principal	P L	1	
852	Asistent Medical		executie	Generala	Principal	P L	1	
853	Asistent Medical		executie	Generala	Principal	P L	1	
854	Asistent Medical		executie	Generala	Principal	P L	1	
855	Asistent Medical		executie	Generala	Principal	P L	1	
856	Registrator medical		executie		Principal	M	1	
857	Infirmiera		executie			G	1	
858	Infirmiera		executie			G	1	
859	Infirmiera		executie			G	1	
860	Infirmiera		executie			G	1	
861	Infirmiera		executie			G	1	
862	Infirmiera		executie			G	1	
863	Infirmiera		executie			G	1	
864	Ingrijitoare		executie			G	1	
865	Ingrijitoare		executie			G	1	
866	Ingrijitoare		executie			G	1	
867	Ingrijitoare		executie			G	1	
	SECȚIA CHIRURGIE PLASTICĂ, MICROCHIRURGIE RECONSTRUCTIVĂ - 20 paturi							30
868	Medic		executie	Chir. plastica si microchir. reconstructiva	Primar	S	0.5	
869	Medic		executie	Chir. plastica si microchir. reconstructiva	Primar	S	0.5	
870	Medic		executie	Chir. plastica si microchir. reconstructiva	Primar	S	0.5	
871	Medic		executie	Chir. plastica si microchir. reconstructiva	Specialist	S	0.5	
872	Medic		executie	Chir. plastica si microchir. reconstructiva	Specialist	S	0.5	
873	Asistent Medical Sef	conducere		Pediatrie	Principal	S	1	
874	Asistent Medical		executie	Generala	Principal	S	1	
875	Asistent Medical		executie	Generala	Principal	S	1	
876	Asistent Medical		executie	Generala	Principal	S	1	
877	Asistent Medical		executie	Generala	Principal	P L	1	
878	Asistent Medical		executie	Generala	Principal	P L	1	
879	Asistent Medical		executie	Generala	Principal	P L	1	



880	Asistent Medical		executie	Generala	Principal	P L	1
881	Asistent Medical		executie	Generala	Principal	P L	1
882	Asistent Medical		executie	Generala	Principal	P L	1
883	Asistent Medical		executie	Pediatrie	Principal	P L	1
884	Infirmiera		executie			M	1
885	Infirmiera		executie			M	1
886	Infirmiera		executie			G	1
887	Infirmiera		executie			G	1
888	Infirmiera		executie			G	1
889	Infirmiera		executie			G	1
890	Infirmiera		executie			G	1
891	Infirmiera		executie			G	1
892	Infirmiera		executie			G	1
893	Infirmiera		executie			G	1
894	Infirmiera		executie			G	1
895	Infirmiera		executie			G	1
896	Ingrijitoare		executie			G	1
897	Ingrijitoare		executie			G	1
898	Brancardier		executie			G	1
899	Brancardier		executie			G	1
900	Brancardier		executie			G	1
	SECȚIA CHIRURGIE PLASTICĂ, MICROCHIR. RECONSTRUCTIVĂ - Unitatea funcțională de arși - I						30.5
901	Medic		executie	Oftalmologie	Primar	S	1
	SECȚIA CHIRURGIE PLASTICĂ, MICROCHIR. RECONSTRUCTIVĂ - Compartiment Oftalmologie -						1
902	Medic coordonator	conducere		Pediatrie	Primar	S	1
903	Asistent Medical		executie	Generala	Principal	SSD	1
904	Asistent Medical		executie	Generala	Principal	P L	1
905	Asistent Medical		executie	Generala	Principal	P L	1
906	Asistent Medical		executie	Pediatrie	Principal	P L	1
907	Asistent Medical		executie	Pediatrie	Debutant	P L	1
908	Infirmiera		executie			G	1
909	Infirmiera		executie			G	1
910	Infirmiera		executie			G	1



911	Infirmiera		executie		Debutant	G	1
912	Infirmiera		executie		Debutant	G	1
913	Ingrijitoare		executie			G	1
914	Ingrijitoare		executie			G	1
Compartiment RECUPERARE PEDIATRICA - 10 paturi							13
915	Medic coordonator	conducere		Pediatrie	primar	S	1
916	Asistent Medical		executie	Generala	Principal	PL	1
917	Asistent medical		executie	Generala	Principal	PL	1
918	Asistent medical		executie	Generala	Principal	PL	1
919	Asistent medical		executie	Generala	Principal	PL	1
920	Asistent medical		executie	Generala	Principal	PL	1
921	Infirmiera		executie			G	1
922	Infirmiera		executie			G	1
923	Ingrijitoare		executie			G	1
924	Ingrijitoare		executie			G	1
Compartiment PEDIATRIE CRONICI - 10 paturi							10
925	Medic coordonator		executie	Medicina fizica si de reabilitare	Primar	S	1
926	Medic		executie	Balneologie	Specialist	S	1
927	Fiziokinetoterapeut		executie	Balneo-fiziokineto. si recuperare	Principal	S	1
928	Fiziokinetoterapeut		executie	Balneo-fiziokineto. si recuperare	Principal	S	1
929	Fiziokinetoterapeut		executie	Fiziokinetoterapie	Specialist	S	1
930	Kinetoterapeut		executie	Kineto. si motricitate speciala	Principal	S	1
931	Kinetoterapeut		executie	Kineto. si motricitate speciala		S	1
932	Profesor CFM		executie	Kinetoterapie	Principal	S	1
933	Profesor CFM		executie	Kinetoterapie	Principal	S	1
934	Asistent Medical Sef	conducere		Balneologie	Principal	P L	1
935	Asistent Medical		executie	Balneologie	Principal	S	1
936	Asistent Medical		executie	Balneologie	Principal	S	1
937	Asistent Medical		executie	Balneologie	Principal	P L	1
938	Asistent Medical		executie	Balneologie	Principal	P L	1
939	Asistent Medical		executie	Balneologie	Principal	P L	1
940	Asistent Medical		executie	Balneologie	Principal	P L	1
941	Asistent Medical		executie	Balneologie	Principal	P L	1



942	Asistent Medical		executie	Balneologie	Principal	P L	1
943	Asistent Medical		executie	Balneologie	Principal	P L	1
944	Asistent Medical		executie	Balneologie	Principal	P L	1
945	Asistent Medical		executie	Balneologie	Principal	P L	1
946	Asistent Medical		executie	Balneologie	Principal	P L	1
947	Asistent Medical		executie	Balneologie	Principal	P L	1
948	Registrator medical		executie		Principal	M	1
949	Infirmiera		executie			G	1
950	Infirmiera		executie			G	1
951	Infirmiera		executie			G	1
952	Infirmiera		executie		Debutant	G	1
953	Infirmiera		executie		Debutant	G	1
954	Infirmiera		executie		Debutant	G	1
955	Ingrijitoare		executie			G	1
956	Ingrijitoare		executie			G	1
COMPARTIMENT MEDICINĂ FIZICĂ ȘI DE REABILITARE - 17 paturi							
957	Medic Sef laborator	conducere		Medicina de laborator	grad II	S	1
958	Medic		executie	Medicina de laborator	Primar	S	1
959	Medic		executie	Medicina de laborator	Primar	S	1
960	Medic		executie	Medicina de laborator	Primar	S	1
961	Medic		executie	Medicina de laborator	Primar	S	1
962	Medic		executie	Medicina de laborator	Primar	S	1
963	Medic		executie	Microbiologie medicala	Specialist	S	1
964	Bioinginer medical		executie	Bioinstrumentatie si tehnica medicala	Principal	S	1
965	Biolog		executie	Imunologie	Principal	S	1
966	Biolog		executie	Biochimie	Principal	S	1
967	Biolog		executie	Biologie	Specialist	S	1
968	Biochimist		executie	Biochimie medicala	Principal	S	1
969	Biolog		executie	Biologie	Debutant	S	1
970	Biolog		executie	Biologie	Debutant	S	1
971	Chimist		executie	Biochimie	Principal	S	1
972	Chimist		executie	Biochimie	Principal	S	1
973	Chimist		executie	Biochimie	Principal	S	1



974	Chimist		executie	Bacteriologie	Principal	S	1
975	Chimist		executie	Biochimie	Principal	S	1
976	Chimist		executie	Biochimie	Principal	S	1
977	Asistent Medical Sef	conducere		Laborator	Principal	P L	1
978	Asistent Medical		executie	Laborator	Principal	S	1
979	Asistent Medical		executie	Generala	Principal	S	1
980	Asistent Medical		executie	Laborator	Principal	P L	1
981	Asistent Medical		executie	Laborator	Principal	P L	1
982	Asistent Medical		executie	Laborator	Principal	P L	1
983	Asistent Medical		executie	Laborator	Principal	P L	1
984	Asistent Medical		executie	Laborator	Principal	P L	1
985	Asistent Medical		executie	Laborator	Principal	P L	1
986	Asistent Medical		executie	Laborator	Principal	P L	1
987	Asistent Medical		executie	Laborator	Principal	P L	1
988	Asistent Medical		executie	Laborator	Principal	P L	1
989	Asistent Medical		executie	Laborator	Principal	P L	1
990	Asistent Medical		executie	Laborator	Principal	P L	1
991	Asistent Medical		executie	Laborator	Principal	P L	1
992	Asistent Medical		executie	Laborator	Principal	P L	1
993	Asistent Medical		executie	Generala	Principal	P L	1
994	Asistent Medical		executie	Laborator	Principal	M	1
995	Asistent Medical		executie	Laborator	Principal	M	1
996	Asistent Medical		executie	Laborator	Principal	M	1
997	Asistent Medical		executie	Generala		P L	1
998	Asistent Medical		executie	Generala		P L	1
999	Asistent Medical		executie	Generala	Principal	P L	1
1000	Asistent Medical		executie	Laborator		P L	1
1001	Asistent Medical		executie	Generala	Debutant	P L	1
1002	Asistent Medical		executie	Generala	Debutant	P L	1
1003	Asistent Medical		executie	Generala	Debutant	P L	1
1004	Asistent Medical		executie	Generala	Debutant	P L	1
1005	Asistent Medical		executie	Generala	Debutant	P L	1
1006	Asistent Medical		executie	Generala	Debutant	P L	1



1007	Registrator medical		executie		Principal	M	1
1008	Registrator medical		executie		Principal	M	1
1009	Registrator medical		executie		Principal	M	1
1010	Ingrijitoare		executie			G	1
1011	Ingrijitoare		executie			G	1
1012	Ingrijitoare		executie			G	1
1013	Ingrijitoare		executie			G	1
	LABORATOR ANALIZE MEDICALE						57
1014	Medic Sef serviciu	conducere		Anatomie patologica	Primar	S	1
1015	Medic		executie	Anatomie patologica	Primar	S	1
1016	Medic		executie	Anatomie patologica	Primar	S	1
1017	Medic		executie	Anatomie patologica	Primar	S	1
1018	Asistent Medical coordonator		executie	Laborator	Principal	S	1
1019	Asistent Medical		executie	Laborator	Principal	S	1
1020	Asistent Medical		executie	Laborator	Principal	S	1
1021	Asistent Medical		executie	Generala	Principal	S	1
1022	Asistent Medical		executie	Laborator	Principal	S	1
1023	Asistent Medical		executie	Laborator	Principal	S	1
1024	Registrator medical		executie		Principal	M	1
1025	Autopsier		executie			M	1
1026	Ingrijitoare		executie			G	1
	SERVICIUL DE ANATOMIE PATOLOGICĂ (citologie, histopatologie, prosectură)						13
1027	Medic Sef laborator	conducere		Radiologie si imagistica medicala	grad II	S	1
1028	Medic		executie	Radiologie si imagistica medicala	Primar	S	1
1029	Medic		executie	Radiologie si imagistica medicala	Primar	S	1
1030	Medic		executie	Radiologie si imagistica medicala	Primar	S	1
1031	Medic		executie	Radiologie si imagistica medicala	Primar	S	1
1032	Medic		executie	Radiologie si imagistica medicala	Specialist	S	1
1033	Medic		executie	Radiologie si imagistica medicala	Specialist	S	1
1034	Medic		executie	Radiologie si imagistica medicala	Rezident ulti	S	1
1035	Fizician medical		executie	Fizica medicala		S	1
1036	Bioinginer medical		executie	Bioinginerie medicala		S	1
1037	Bioinginer medical		executie	Bioinginerie medicala		S	1



1038	Tehnician de radiol. si imagistica	executie	Radiologie	Principal	S	1
1039	Asistent Medical Sef	conducere	Radiologie	Principal	PL	1
1040	Asistent Medical	executie	Radiologie	Principal	PL	1
1041	Asistent Medical	executie	Radiologie	Principal	PL	1
1042	Asistent Medical	executie	Radiologie	Principal	PL	1
1043	Asistent Medical	executie	Radiologie	Principal	PL	1
1044	Asistent Medical	executie	Radiologie	Principal	PL	1
1045	Asistent Medical	executie	Radiologie	Principal	PL	1
1046	Asistent Medical	executie	Radiologie	Principal	PL	1
1047	Asistent Medical	executie	Radiologie	Principal	PL	1
1048	Asistent Medical	executie	Radiologie	Principal	PL	1
1049	Asistent Medical	executie	Radiologie	Principal	PL	1
1050	Asistent Medical	executie	Radiologie	Principal	PL	1
1051	Asistent Medical	executie	Radiologie	Principal	PL	1
1052	Asistent Medical	executie	Radiologie		PL	1
1053	Asistent Medical	executie	Generala		PL	1
1054	Asistent Medical	executie	Generala		PL	1
1055	Asistent Medical	executie	Generala		PL	1
1056	Asistent Medical	executie	Radiologie	Debutant	PL	1
1057	Registrator medical	executie		Principal	M	1
1058	Registrator medical	executie		Principal	M	1
1059	Ingrijitoare	executie			G	1
1060	Ingrijitoare	executie			G	1
1061	Ingrijitoare	executie			G	1
1062	Ingrijitoare	executie			G	1
	LABORATOR RADIOLOGIE ŞI IMAGISTICĂ MEDICALĂ					36
1063	Asistent Medical coordonator	executie	Generala	Principal	PL	1
1064	Asistent Medical	executie	Generala	Principal	PL	1
1065	Asistent Medical	executie	Laborator	Principal	PL	1
1066	Asistent Medical	executie	Radiologie	Principal	PL	1
1067	Asistent Medical	executie	Generala	Principal	PL	1
1068	Bioinginer medical	executie	Bioinginerie medicala		S	1
1069	Ingrijitoare	executie			G	1



LABORATOR EXPLORARI FUNCȚIONALE							
1070	Medic Sef serviciu	conducere		Epidemiologie	gradul I	S	1
1071	Medic		executie	Epidemiologie	Primar	S	1
1072	Medic		executie	Igiena	Specialist	S	1
1073	Medic		executie	Boli infectioase	Specialist	S	1
1074	Asistent Medical coordonator		executie	Igiena si sanatate publica	Principal	P L	1
1075	Asistent Medical		executie	Igiena si sanatate publica	Principal	P L	1
1076	Asistent Medical		executie	Igiena si sanatate publica	Principal	P L	1
1077	Asistent Medical		executie	Igiena si sanatate publica	Principal	P L	1
1078	Agent DDD		executie			G	1
1079	Agent DDD		executie			G	1
1080	Agent DDD		executie			G	1
SERVICIUL DE PREVENIRE A INFECȚIILOR ASOCIATE ASISTENȚEI MEDICALE							
1081	Asistent Medical		executie	Generala	Principal	PL	1
1082	Asistent Medical		executie	Generala	Principal	PL	1
1083	Asistent Medical		executie	Generala	Principal	P L	1
1084	Asistent Medical		executie	Generala	Principal	P L	1
1085	Asistent Medical		executie	Generala	Principal	P L	1
1086	Asistent Medical		executie	Pediatrie	Principal	P L	1
1087	Asistent Medical		executie	Pediatrie	Principal	P L	1
1088	Asistent Medical		executie	Generala	Principal	P L	1
1089	Asistent Medical		executie	Generala	Debutant	P L	1
1090	Ingrijitoare		executie			G	1
STERILIZARE							
1091	Farmacist Sef	conducere		Farmacie	grad II	S	1
1092	Farmacist		executie	Farmacie	Primar	S	1
1093	Farmacist		executie	Farmacie	Primar	S	1
1094	Farmacist		executie	Farmacie	Primar	S	1
1095	Farmacist		executie	Farmacie	Specialist	S	1
1096	Asistent Medical		executie	Farmacie	Principal	S	0.5
1097	Asistent Medical		executie	Farmacie	Principal	P L	1
1098	Asistent Medical		executie	Farmacie	Principal	P L	1
1099	Asistent Medical		executie	Farmacie	Principal	P L	1



1130	Asistent Medical		executie	Pediatrie	Principal	P L	1
1131	Asistent Medical		executie	Pediatrie	Principal	P L	1
1132	Asistent Medical		executie	Pediatrie	Principal	P L	1
1133	Asistent Medical		executie	Generala	Principal	P L	1
1134	Asistent Medical		executie	Generala	Principal	P L	1
1135	Asistent Medical		executie	Generala	Principal	P L	1
1136	Asistent Medical		executie	Generala	Principal	P L	1
1137	Asistent Medical		executie	Generala	Principal	P L	1
1138	Asistent Medical		executie	Generala		P L	1
1139	Asistent Medical		executie	Generala		P L	1
1140	Asistent Medical		executie	Generala		P L	1
1141	Bioinginer medical		executie	Bioinginerie medicala		S	1
1142	Infirmiera		executie			G	1
1143	Infirmiera		executie			G	1
1144	Infirmiera		executie			G	1
1145	Infirmiera		executie			G	1
1146	Infirmiera		executie			G	1
1147	Infirmiera		executie			G	1
1148	Infirmiera		executie			G	1
1149	Infirmiera		executie			G	1
1150	Infirmiera		executie			G	1
1151	Infirmiera		executie			G	1
1152	Infirmiera		executie			G	1
1153	Infirmiera		executie			G	1
1154	Infirmiera		executie		Debutant	G	1
1155	Infirmiera		executie		Debutant	G	1
1156	Infirmiera		executie		Debutant	G	1
1157	Ingrijitoare		executie			G	1
1158	Ingrijitoare		executie			G	1
1159	Ingrijitoare		executie			G	1
1160	Ingrijitoare		executie			G	1
1161	Brancardier		executie			G	1
1162	Brancardier		executie			G	1



1163	Brancardier		executie			G	1
1164	Brancardier		executie			G	1
1165	Brancardier		executie			G	1
1166	Brancardier		executie			G	1
	BLOC OPERATOR						52
1167	Asistent Medical		executie	Generala	Principal	S	1
1168	Asistent Medical		executie	Generala	Principal	S	1
1169	Asistent Medical		executie	Generala	Principal	S	1
1170	Asistent Medical		executie	Generala	Principal	S	1
1171	Asistent Medical		executie	Generala	Principal	PL	1
1172	Asistent Medical		executie	Generala	Principal	PL	1
1173	Asistent Medical		executie	Generala	Principal	PL	1
1174	Asistent Medical		executie	Generala	Principal	PL	1
1175	Asistent Medical		executie	Generala	Principal	PL	1
	Punct STERILIZARE BLOC OPERATOR						9
	BLOC OPERATOR, PUNCT STERILIZARE BLOC OPERATOR						61
1176	Asistent Medical		executie	Generala	Principal	PL	1
1177	Asistent Medical		executie	Generala	Principal	PL	1
1178	Asistent Medical		executie	Generala	Principal	PL	1
1179	Asistent Medical		executie	Pediatrie	Principal	PL	1
1180	Asistent Medical		executie	Pediatrie	Principal	PL	1
1181	Asistent Medical		executie	Pediatrie	Principal	PL	1
1182	Asistent Medical		executie	Generala		PL	1
1183	Ingrijitoare		executie			G	1
1184	Ingrijitoare		executie			G	1
1185	Ingrijitoare		executie			G	1
1186	Ingrijitoare		executie			G	1
1187	Ingrijitoare		executie			G	1
	BUCĂTĂRIE - DIETETICĂ						12
1188	Consilier juridic		executie		IA	S	1
1189	Consilier juridic		executie		IA	S	1
	Compartiment juridic						2
1190	Sef serviciu	conducere			Grad II	S	1
1191	Economist specialist		executie		IA	S	1

JUDEȚUL IAȘI
CONSILIUL JUDEȚEAN IAȘI
Anexă la Hotărârea

Nr. 49

Nr. 25 FEB. 2016

Amul. I. nr. 1. nr. 2. nr. 3. nr. 4. nr. 5. nr. 6. nr. 7. nr. 8. nr. 9. nr. 10. nr. 11. nr. 12. nr. 13. nr. 14. nr. 15. nr. 16. nr. 17. nr. 18. nr. 19. nr. 20. nr. 21. nr. 22. nr. 23. nr. 24. nr. 25. nr. 26. nr. 27. nr. 28. nr. 29. nr. 30. nr. 31. nr. 32. nr. 33. nr. 34. nr. 35. nr. 36. nr. 37. nr. 38. nr. 39. nr. 40. nr. 41. nr. 42. nr. 43. nr. 44. nr. 45. nr. 46. nr. 47. nr. 48. nr. 49. nr. 50. nr. 51. nr. 52. nr. 53. nr. 54. nr. 55. nr. 56. nr. 57. nr. 58. nr. 59. nr. 60. nr. 61. nr. 62. nr. 63. nr. 64. nr. 65. nr. 66. nr. 67. nr. 68. nr. 69. nr. 70. nr. 71. nr. 72. nr. 73. nr. 74. nr. 75. nr. 76. nr. 77. nr. 78. nr. 79. nr. 80. nr. 81. nr. 82. nr. 83. nr. 84. nr. 85. nr. 86. nr. 87. nr. 88. nr. 89. nr. 90. nr. 91. nr. 92. nr. 93. nr. 94. nr. 95. nr. 96. nr. 97. nr. 98. nr. 99. nr. 100.

1192	Economist specialist		executie		IA	S	1
1193	Economist specialist		executie		IA	S	1
1194	Economist		executie		II	S	1
1195	Referent de specialitate		executie		I	S	1
1196	Inspector de specialitate RU		executie		I	S	1
1197	Referent		executie		I	SSD	1
1198	Referent		executie		IA	M	1
1199	Referent		executie		II	M	1
1200	Arhivar		executie			M	1
RUNOS							11
1201	Referent		executie		I A	M	1
	Compartiment relatii cu publicul						1
1202	Referent de specialitate		executie		I	S	1
1203	Referent		executie	Tehnice		M	1
	Compartiment Securitatea Muncii, Protectie civilă						2
	SERVICIUL RUNOS						14
1204	Responsabil cu manager	coordonator				S	1
1205	Medic		executie		Rezid/Spec/Prin	S	1
1206	Referent de specialitate		executie		I	S	1
1207	Referent de specialitate		executie		III	S	1
	Compartiment de management al calitatii serviciilor de sanatate						4
1208	Sef serviciu	conducere			Grad II	S	1
1209	Economist specialist		executie		IA	S	1
1210	Economist specialist		executie		IA	S	1
1211	Economist		executie		I	S	1
1212	Economist (patrimoniu)		executie		I	S	1
1213	Economist specialist		executie		IA	S	1
1214	Economist specialist (buget si investitii)		executie		IA	S	1
1215	Economist		executie		II	S	1
1216	Economist (programe CASS)		executie		II	S	1
1217	Economist		executie		II	S	1
1218	Economist		executie		II	S	1
1219	Registrator medical		executie		Principal	M	1
1220	Registrator medical		executie		Debutant	M	1
	SERVICIUL FINANCIAR-CONTABILITATE						13
1221	Sef serviciu	conducere			Grad I/II	S	1
1222	Referent de specialitate		executie		I	S	1
1223	Referent de specialitate		executie		I	S	1



1224	Referent de specialitate		executie		II	S	1	
	Compartiment Contractare						4	
1225	Referent de specialitate		executie		I	S	1	
1226	Referent de specialitate		executie		III	S	1	
1227	Referent de specialitate		executie		III	S	1	
1228	Referent		executie		Debutant	S	1	
1229	Magaziner		executie			M	1	
1230	Magaziner		executie			M	1	
1231	Muncitor		executie		I		1	
1232	Muncitor		executie	manipulant bunuri	IV		1	
1233	Bioinginer medical		executie	Bioinginer		S	1	
	Compartiment Aprovizionare						9	
1234	Bioinginer medical		executie	Bioinginer	Debutant	S	1	
1235	Bioinginer medical		executie	Bioinginer	Debutant	S	1	
1236	Inginer investitii		executie	Tehnice	II	S	1	
	Compartiment Investitii						3	
1237	Sofer		executie	Sofer	II	M	1	
1238	Sofer		executie	Sofer	II	M	1	
	Compartiment Transport						2	
	SERVICIUL ACHIZIȚII PUBLICE, CONTRACTARE, APROVIZIONARE, TRANSPORT și INVESTIȚII							18
1239	Preot		executie		I	S	1	
	ASISTENTA RELIGIOASA						1	
1240	Referent de specialitate		executie		III	S	1	
	GDPR						1	
1241	Spalatoreasa		executie			G	1	
1242	Spalatoreasa		executie			G	1	
1243	Spalatoreasa		executie			G	1	
1244	Spalatoreasa		executie			G	1	
1245	Spalatoreasa		executie			G	1	
1246	Spalatoreasa		executie			G	1	
1247	Spalatoreasa		executie			G	1	
1248	Spalatoreasa		executie			G	1	
1249	Spalatoreasa		executie			G	1	
1250	Spalatoreasa		executie			G	1	
1251	Spalatoreasa		executie			G	1	
1252	Spalatoreasa		executie			G	1	



1253	Spalatoreasa		executie			G	1
1254	Spalatoreasa		executie			G	1
1255	Spalatoreasa		executie			G	1
1256	Spalatoreasa		executie			G	1
1257	Spalatoreasa		executie			G	1
1258	Spalatoreasa		executie			G	1
1259	Spalatoreasa		executie			G	1
1260	Spalatoreasa		executie			G	1
1261	Ingrijitoare		executie			G	1
1262	Ingrijitoare		executie			G	1
1263	Ingrijitoare		executie			G	1
1264	Ingrijitoare		executie			G	1
1265	Ingrijitoare		executie			G	1
	SPĂLĂTORIE						25
1266	Ingrijitoare		executie			G	1
1267	Ingrijitoare		executie			G	1
1268	Ingrijitoare		executie			G	1
1269	Ingrijitoare		executie			G	1
1270	Ingrijitoare		executie			G	1
1271	Ingrijitoare		executie			G	1
1272	Ingrijitoare		executie			G	1
1273	Ingrijitoare		executie			G	1
1274	Ingrijitoare		executie			G	1
1275	Ingrijitoare		executie			G	1
1276	Ingrijitoare		executie			G	1
1277	Ingrijitoare		executie			G	1
1278	Ingrijitoare		executie			G	1
1279	Ingrijitoare		executie			G	1
1280	Ingrijitoare		executie			G	1
1281	Ingrijitoare		executie			G	1
1282	Ingrijitoare		executie			G	1
1283	Ingrijitoare		executie			G	1
1284	Ingrijitoare		executie			G	1

JUDEȚUL IAȘI
CONSILIUL JUDEȚEAN IAȘI
Anexă la Hotărârea
Nr. 49 / 25 FEB 2026
Anul Luna Ziua

1285	Ingrijitoare		executie			G	1
1286	Ingrijitoare		executie			G	1
1287	Ingrijitoare		executie			G	1
1288	Ingrijitoare		executie			G	1
1289	Ingrijitoare		executie			G	1
1290	Ingrijitoare		executie			G	1
1291	Ingrijitoare		executie			G	1
1292	Ingrijitoare		executie			G	1
1293	Ingrijitoare		executie			G	1
1294	Ingrijitoare		executie			G	1
1295	Ingrijitoare		executie			G	1
1296	Ingrijitoare		executie			G	1
1297	Ingrijitoare		executie			G	1
1298	Ingrijitoare		executie			G	1
1299	Ingrijitoare		executie			G	1
1300	Ingrijitoare		executie			G	1
1301	Ingrijitoare		executie			G	1
1302	Ingrijitoare		executie			G	1
1303	Muncitor necalificat II		executie		II	G	1
1304	Muncitor necalificat II		executie		II	G	1
1305	Muncitor necalificat II		executie		II	G	1
1306	Muncitor necalificat II		executie		II	G	1
1307	Muncitor necalificat II		executie		II	G	1
1308	Muncitor necalificat II		executie		II	G	1
1309	Muncitor necalificat II		executie		II	G	1
	SECTOR COMUN						44
1310	Asistent Medical - coordonator		executie	Pediatrie	Principal	P L	1
1311	Asistent Medical - coordonator		executie	Generala	Principal	P L	1
	<i>Asistenti medicali</i>						2
1312	Bucătar calificat		executie				1
1313	Bucătar calificat		executie				1
1314	Bucătar calificat		executie				1
1315	Bucătar calificat		executie				1

JUDETUL IASI
CONSILIUL JUDETEAN IASI

Atestă la înregistrarea

Nr. 25 FEB 2025

Anul..... Luna..... Ziua.....

1316	Bucătar calificat		executie				1
1317	Bucătar calificat		executie				1
1318	Bucătar calificat		executie				1
1319	Bucătar calificat		executie				1
1320	Bucătar calificat		executie				1
1321	Bucătar calificat		executie				1
1322	Bucătar calificat		executie				1
1323	Bucătar calificat		executie				1
1324	Bucătar calificat		executie				1
1325	Bucătar calificat		executie				1
1326	Bucătar calificat		executie				1
1327	Bucătar calificat		executie				1
1328	Bucătar calificat		executie				1
1329	Bucătar calificat		executie				1
	Bucătari calificați						18
1330	Ingrijitoare		executie		G		1
1331	Ingrijitoare		executie		G		1
1332	Ingrijitoare		executie		G		1
1333	Ingrijitoare		executie		G		1
	Ingrijitori curatenie bloc alimentar						4
	BLOC ALIMENTAR						24
1334	Sef serviciu	conducere		Grad II	S		1
1335	Referent de specialitate		executie	III	S		1
1336	Referent de specialitate		executie	III	S		1
1337	Bioinginer/bioinginer medical		executie	Debutant	S		1
1338	Referent		executie	IA	M		1
	Compartiment informatică						5
1339	Registrator medical		executie	Principal	M		1
1340	Registrator medical		executie	Principal	M		1
1341	Registrator medical		executie	Principal	M		1
1342	Registrator medical		executie	Principal	M		1
1343	Registrator medical		executie	Principal	M		1
1344	Registrator medical		executie	Principal	M		1
1345	Registrator medical		executie	Principal	M		1
1346	Registrator medical		executie	Principal	M		1



1347	Registrator medical		executie		Principal	M	1
1348	Registrator medical		executie		Principal	M	1
1349	Registrator medical		executie		Principal	M	1
1350	Registrator medical		executie		Principal	M	1
1351	Registrator medical		executie		Principal	M	1
1352	Registrator medical		executie		Principal	M	1
1353	Registrator medical		executie		Principal	M	1
1354	Registrator medical		executie		Principal	M	1
1355	Muncitor		executie	Telefonist	IV	G	1
COMPARTIMENT REGISTRATURA INTERNARI, PROGRAMARI PACIENȚI							17
1356	Bioinginer medical		executie	Bioinformatica si management sanitar	Principal	S	1
1357	Statistician medical		executie		Principal	M	1
1358	Statistician medical		executie		Principal	M	1
1359	Statistician medical		executie		Debutant	M	1
1360	Registrator medical		executie		Principal	M	1
<i>Compartiment statistică medicală</i>							5
SERVICIUL INFORMATICA ȘI STATISTICA MEDICALA							27
1361	Paznic		executie			G	1
1362	Paznic		executie			G	1
1363	Paznic		executie			G	1
1364	Paznic		executie			G	1
1365	Paznic		executie			G	1
1366	Paznic		executie			G	1
1367	Paznic		executie			G	1
1368	Paznic		executie			G	1
1369	Paznic		executie			G	1
1370	Paznic		executie			G	1
1371	Paznic		executie			G	1
1372	Paznic		executie			G	1
1373	Paznic		executie			G	1
1374	Paznic		executie			G	1
1375	Paznic		executie			G	1
1376	Paznic		executie			G	1
1377	Paznic		executie			G	1
1378	Paznic		executie			G	1
1379	Paznic		executie			G	1
1380	Paznic		executie			G	1
1381	Paznic		executie			G	1

JUDEȚUL IAȘI
CONSILIUL JUDEȚEAN IAȘI
Anexă la Hotărârea

Nr. 49

Anul Lună Zi Anul 2025

1382	Paznic		executie			G	1
1383	Paznic		executie			G	1
1384	Paznic		executie			G	1
COMPARTIMENT DE DESERVIRE PAZA SI SITUATII DE URGENTA							
1385	Inginer specialist			inginer	IA	S	1
1386	Inginer			inginer	Debutant	S	1
1387	Muncitor		executie	Zidar	I		1
1388	Muncitor		executie	Zidar	I		1
1389	Muncitor		executie	Zidar	I		1
1390	Muncitor		executie	Zugrav-vopsitor	IV		1
1391	Muncitor		executie	Lacatus mecanic	I		1
1392	Muncitor		executie	Lacatus mecanic	III		1
1393	Muncitor		executie	Instalator	IV		1
1394	Muncitor		executie	Instalator	IV		1
1395	Muncitor		executie	Electrician	II		1
1396	Muncitor		executie	Electrician	II		1
MUNCITORI PENTRU ACTIVITATI DE INTRETINERE CLADIRI SI INSTALATII DE APA, LUMINA SI INCALZI							
1397	Muncitor		executie	Liftier	I		1
1398	Muncitor		executie	Liftier	I		1
1399	Muncitor		executie	Liftier	I		1
1400	Muncitor		executie	Liftier	II		1
1401	Muncitor		executie	Liftier	IV		1
LIFTURI							
5							
1402	Muncitor		executie	Electrician	I		1
1403	Muncitor		executie	Electrician	I		1
1404	Muncitor		executie	Electrician	I		1
1405	Muncitor		executie	Electrician	II		1
1406	Muncitor		executie	Electrician	II		1
DESERVIRE GRUP ELECTROGEN							
5							
1407	Muncitor		executie	Instalator	I		1
1408	Muncitor		executie	Instalator/lacatus mecanic	I		1
1409	Muncitor		executie	Instalator	III		1
1410	Muncitor		executie	Instalator	III		1
1411	Muncitor		executie	Instalator	III		1
CENTRALA TERMICA, DESERVIRE STATII DE POMPE							
5							
1412	Muncitor		executie	Lacatus mecanic	IV		1



1413	Muncitor		executie	Electrician	I		1
1414	Inginer		executie	instalații	I	S	1
1415	Referent de specialitate		executie		I	S	1
COMPARTIMENT TEHNIC- ADMINISTRATIV							31
1416	Sef serviciu	conducere		tehnice	Grad I/II	S	1
1417	Referent		executie	tehnice		M	1
SERVICIUL PRIVAT PENTRU SITUATII DE URGENTA PROPRIU DE TIP PI TEHNIC ADMINISTRATIV							57
1418	Medic		executie	Medicina muncii	Primar	S	1
1419	Asistent medical		executie	Pediatrie	Principal	PL	1
COMPARTIMENT MEDICINA MUNCII							2
1420	Asistent social		executie		Principal	S	1
ASISTENȚĂ SOCIALĂ - POSTURI NORMATE PE UNITATE							1
1421	Asistent Medical coordonator		executie	Generala	Principal	PL	1
1422	Asistent Medical		executie	Generala	Principal	PL	1
1423	Asistent Medical		executie	Generala	Principal	PL	1
1424	Asistent Medical		executie	Generala	Principal	PL	1
1425	Asistent Medical		executie	Generala	Principal	PL	1
1426	Asistent Medical		executie	Pediatrie	Principal	PL	1
1427	Asistent Medical		executie	Pediatrie	Principal	PL	1
1428	Asistent Medical		executie	Pediatrie	Principal	PL	1
1429	Asistent Medical		executie	Generala		PL	1
1430	Asistent Medical		executie	Generala		PL	1
1431	Asistent Medical		executie	Generala		PL	1
1432	Asistent Medical		executie	Generala		PL	1
1433	Asistent Medical		executie	Generala		PL	1
1434	Asistent Medical		executie	Generala		PL	1
1435	Asistent Medical		executie	Generala		PL	1
1436	Asistent Medical		executie	Generala		PL	1
1437	Infirmiera		executie			G	1
1438	Infirmiera		executie		Debutant	G	1
1439	Ingrijitoare		executie			G	1
1440	Ingrijitoare		executie			G	1
1441	Ingrijitoare		executie			G	1
1442	Ingrijitoare		executie			G	1
SERVICIUL SPITALIZARE DE ZI - 20 paturi							22



1443	Medic coordonator		executie	Dermatovenerologie	Primar	S	1
1444	Medic		executie	Endocrinologie	Primar	S	1
1445	Medic		executie	Psihiatrie pediatria	Primar	S	1
1446	Medic		executie	Psihiatrie pediatria	Specialist	S	1
1447	Medic		executie	Oftalmologie	Primar	S	1
1448	Logoped		executie	Logopedie		S	1
1449	Asistent/Sora medicală coordonator		executie	Pediatrie	Principal	M	1
1450	Asistent Medical		executie	Generală	Principal	S	1
1451	Asistent Medical		executie	Generală	Principal	S	1
1452	Asistent Medical		executie	Generală	Principal	SSD	1
1453	Asistent Medical		executie	Generală	Principal	P L	1
1454	Asistent Medical		executie	Generală	Principal	P L	1
1455	Asistent Medical		executie	Generală	Principal	P L	1
1456	Asistent Medical		executie	Generală	Principal	P L	1
1457	Asistent Medical		executie	Generală	Principal	P L	1
1458	Asistent Medical		executie	Generală	Principal	P L	1
1459	Asistent Medical		executie	Pediatrie	Principal	P L	1
1460	Asistent Medical		executie	Pediatrie	Principal	P L	1
1461	Asistent Medical		executie	Pediatrie	Principal	P L	1
1462	Asistent Medical		executie	Pediatrie	Principal	P L	1
1463	Asistent Medical		executie	Pediatrie	Principal	P L	1
1464	Asistent Medical		executie	Pediatrie	Principal	P L	1
1465	Asistent Medical		executie	Pediatrie	Principal	P L	1
1466	Asistent Medical		executie	Pediatrie	Principal	P L	1
1467	Asistent Medical		executie	Generală		P L	1
1468	Asistent Medical		executie	Generală		P L	1
1469	Registrator medical		executie		Principal	M	1
1470	Registrator medical		executie		Principal	M	1
1471	Registrator medical		executie		Principal	M	1
1472	Registrator medical		executie		Debutant	M	1
1473	Ingrijitoare		executie			G	1
1474	Ingrijitoare		executie			G	1
1475	Ingrijitoare		executie			G	1

JUDEȚUL IAȘI
CONSILIUL JUDEȚEAN IAȘI
Anexă la Hotărârea
Nr. 25. FEB 2020
Anul.....Luna.....Zila.....

1476	Ingrijitoare		executie			G	1
	AMBULATORIUL INTEGRAT						33
1477	Medic Sef sectie	conducere		Medicina de urgenta	Grad II	S	1
1478	Medic		executie	Medicina de urgenta	Primar	S	1
1479	Medic		executie	Medicina de urgenta	Primar	S	1
1480	Medic		executie	Medicina de urgenta	Primar	S	1
1481	Medic		executie	Medicina de urgenta	primar	S	1
1482	Medic		executie	Pediatrie	Primar	S	1
1483	Medic		executie	Pediatrie	Primar	S	1
1484	Medic		executie	Pediatrie	Primar	S	1
1485	Medic		executie	Pediatrie	Primar	S	1
1486	Medic		executie	Pediatrie	Primar	S	1
1487	Medic		executie	Pediatrie	Primar	S	1
1488	Medic		executie	Pediatrie	Primar	S	1
1489	Medic		executie	Pediatrie	Primar	S	1
1490	Medic		executie	Pediatrie	Primar	S	1
1491	Medic		executie	Medicina de urgenta	Specialist	S	1
1492	Medic		executie	Medicina de urgenta	Specialist	S	1
1493	Medic		executie	Medicina de urgenta	Specialist	S	1
1494	Medic		executie	Medicina de urgenta	Specialist	S	1
1495	Medic		executie	Medicina de urgenta	Specialist	S	1
1496	Medic		executie	Medicina de urgenta	Specialist	S	1
1497	Medic		executie	Medicina de urgenta	Specialist	S	1
1498	Medic		executie	Medicina de urgenta	Specialist	S	1
1499	Medic		executie	Pediatrie	Specialist	S	1
1500	Medic		executie	Pediatrie	Specialist	S	1
1501	Medic		executie	Pediatrie	Specialist	S	1
1502	Medic		executie	Pediatrie	Specialist	S	1
1503	Medic		executie	Pediatrie	Specialist	S	1
1504	Medic		executie	Pediatrie	Specialist	S	1
1505	Medic		executie	Pediatrie	Specialist	S	1
1506	Asistent Social		executie	Pediatrie	Principal	S	1
1507	Asistent Medical Sef	conducere		Generala	Principal	S	1



1508	Asistent Medical		executie	Generala	Principal	S	1
1509	Asistent Medical		executie	Generala	Principal	S	1
1510	Asistent Medical		executie	Generala	Principal	S	1
1511	Asistent Medical		executie	Generala	Principal	S	1
1512	Asistent Medical		executie	Generala	Principal	S	1
1513	Asistent Medical		executie	Generala	Principal	S	1
1514	Asistent Medical		executie	Generala	Principal	S	1
1515	Asistent Medical		executie	Generala	Principal	S	1
1516	Asistent Medical		executie	Generala	Principal	S	1
1517	Asistent Medical		executie	Generala	Principal	S	1
1518	Asistent Medical		executie	Generala	Principal	S	1
1519	Asistent Medical		executie	Generala	Principal	S	1
1520	Asistent Medical		executie	Generala	Principal	S	1
1521	Asistent Medical		executie	Generala	Principal	S	1
1522	Asistent Medical		executie	Pediatrie	Principal	S	1
1523	Asistent Medical		executie	Pediatrie	Principal	S	1
1524	Asistent Medical		executie	Pediatrie	Principal	S	1
1525	Asistent Medical		executie	Generala	Principal	S	1
1526	Asistent Medical		executie	Generala	Principal	S	1
1527	Asistent Medical		executie	Generala	Principal	S	1
1528	Asistent Medical		executie	Generala		S	1
1529	Asistent Medical		executie	Generala		S	1
1530	Asistent Medical		executie	Generala		S	1
1531	Asistent Medical		executie	Generala	Principal	PL	1
1532	Asistent Medical		executie	Generala	Principal	PL	1
1533	Asistent Medical		executie	Generala	Principal	P L	1
1534	Asistent Medical		executie	Generala	Principal	P L	1
1535	Asistent Medical		executie	Generala	Principal	P L	1
1536	Asistent Medical		executie	Generala	Principal	P L	1
1537	Asistent Medical		executie	Generala	Principal	P L	1
1538	Asistent Medical		executie	Generala	Principal	P L	1
1539	Asistent Medical		executie	Generala	Principal	P L	1
1540	Asistent Medical		executie	Generala	Principal	P L	1

JUDEȚUL IAȘI
CONSILIUL JUDEȚEAN IAȘI
Atribuție în Holografă

Nr: 25. FEB. 2025
Zilr.

1541	Asistent Medical		executie	Generala	Principal	PL	1
1542	Asistent Medical		executie	Generala	Principal	PL	1
1543	Asistent Medical		executie	Pediatrie	Principal	PL	1
1544	Asistent Medical		executie	Pediatrie	Principal	PL	1
1545	Asistent Medical		executie	Pediatrie	Principal	PL	1
1546	Asistent Medical		executie	Pediatrie		S	1
1547	Asistent Medical		executie	Pediatrie		S	1
1548	Asistent Medical		executie	Pediatrie		S	1
1549	Asistent Medical		executie	Pediatrie		S	1
1550	Asistent Medical		executie	Pediatrie		S	1
1551	Asistent Medical		executie	Pediatrie		S	1
1552	Asistent Medical		executie	Pediatrie		S	1
1553	Asistent Medical		executie	Pediatrie		S	1
1554	Asistent Medical		executie	Pediatrie		S	1
1555	Asistent Medical		executie	Pediatrie		S	1
1556	Asistent Medical		executie	Pediatrie		PL	1
1557	Asistent Medical		executie	Pediatrie		PL	1
1558	Asistent Medical		executie	Pediatrie		PL	1
1559	Asistent Medical		executie	Pediatrie		PL	1
1560	Asistent Medical		executie	Pediatrie		PL	1
1561	Asistent Medical		executie	Pediatrie		PL	1
1562	Asistent Medical		executie	Pediatrie		PL	1
1563	Asistent Medical		executie	Pediatrie		PL	1
1564	Asistent Medical		executie	Pediatrie		PL	1
1565	Asistent Medical		executie	Pediatrie		PL	1
1566	Asistent Medical		executie	Generala		PL	1
1567	Asistent Medical		executie	Generala		PL	1
1568	Asistent Medical		executie	Generala		PL	1
1569	Asistent Medical		executie	Pediatrie		PL	1
1570	Asistent Medical		executie	Generala	Debutant	S	1
1571	Asistent Medical		executie	Generala	Debutant	S	1
1572	Asistent Medical		executie	Generala	Debutant	S	1
1573	Asistent Medical		executie	Generala	Debutant	S	1

JUDEȚUL IAȘI
CONSILIUL JUDEȚEAN IAȘI
Adresă în Moșârțeni

Nr. 25, FEB. 2026

Anul Lună Ziua

1574	Asistent Medical		executie	Pediatrie	Debutant	S	1
1575	Asistent Medical		executie	Pediatrie	Debutant	S	1
1576	Asistent Medical		executie	Pediatrie	Debutant	S	1
1577	Asistent Medical		executie	Pediatrie	Debutant	S	1
1578	Asistent Medical		executie	Pediatrie	Debutant	S	1
1579	Asistent Medical		executie	Pediatrie	Debutant	S	1
1580	Asistent Medical		executie	Pediatrie	Debutant	S	1
1581	Asistent Medical		executie	Pediatrie	Debutant	S	1
1582	Asistent Medical		executie	Pediatrie	Debutant	S	1
1583	Asistent Medical		executie	Pediatrie	Debutant	S	1
1584	Asistent Medical		executie	Pediatrie	Debutant	PL	1
1585	Asistent Medical		executie	Pediatrie	Debutant	PL	1
1586	Asistent Medical		executie	Pediatrie	Debutant	PL	1
1587	Asistent Medical		executie	Pediatrie	Debutant	PL	1
1588	Asistent Medical		executie	Pediatrie	Debutant	PL	1
1589	Asistent Medical		executie	Pediatrie	Debutant	PL	1
1590	Asistent Medical		executie	Pediatrie	Debutant	PL	1
1591	Asistent Medical		executie	Pediatrie	Debutant	PL	1
1592	Asistent Medical		executie	Pediatrie	Debutant	PL	1
1593	Asistent Medical		executie	Pediatrie	Debutant	PL	1
1594	Registrator medical		executie		Principal	M	1
1595	Registrator medical		executie		Principal	M	1
1596	Registrator medical		executie		Principal	M	1
1597	Registrator medical		executie		Principal	M	1
1598	Registrator medical		executie		Principal	M	1
1599	Registrator medical		executie		Principal	M	1
1600	Registrator medical		executie		Principal	M	1
1601	Registrator medical		executie			M	1
1602	Registrator medical		executie			M	1
1603	Registrator medical		executie			M	1
1604	Registrator medical		executie			M	1
1605	Registrator medical		executie			M	1
1606	Registrator medical		executie			M	1

JUDEȚUL IAȘI
CONSILIUL JUDEȚEAN IAȘI

Anexă la Hotărârea

№ 251/2026

Amplasament: Luna Ziua

1607	Secretar		executie			M	1
1608	Administrator - economist		executie		II	S	1
1609	Inginer de sistem		executie		Debutant	S	1
1610	Infirmiera		executie			M	1
1611	Infirmiera		executie			G	1
1612	Infirmiera		executie			G	1
1613	Infirmiera		executie			G	1
1614	Infirmiera		executie			G	1
1615	Infirmiera		executie			G	1
1616	Infirmiera		executie			G	1
1617	Infirmiera		executie			G	1
1618	Infirmiera		executie			G	1
1619	Infirmiera		executie			G	1
1620	Infirmiera		executie			G	1
1621	Infirmiera		executie			G	1
1622	Infirmiera		executie			G	1
1623	Infirmiera		executie			G	1
1624	Infirmiera		executie			G	1
1625	Infirmiera		executie			G	1
1626	Infirmiera		executie			G	1
1627	Infirmiera		executie			G	1
1628	Infirmiera		executie		Debutant	G	1
1629	Infirmiera		executie		Debutant	G	1
1630	Ingrijitoare		executie			G	1
1631	Ingrijitoare		executie			G	1
1632	Ingrijitoare		executie			G	1
1633	Ingrijitoare		executie			G	1
1634	Ingrijitoare		executie			G	1
1635	Ingrijitoare		executie			G	1
1636	Ingrijitoare		executie			G	1
1637	Ingrijitoare		executie			G	1
1638	Ingrijitoare		executie			G	1
1639	Ingrijitoare		executie			G	1

JUDEȚUL IAȘI
CONSILIUL JUDEȚEAN IAȘI
Anexă la Proclamația
Nr. 25. FEB. 2008
Anul Luna Zile

1640	Brancardier		executie			G	1
1641	Brancardier		executie			G	1
1642	Brancardier		executie			G	1
1643	Brancardier		executie			G	1
1644	Brancardier		executie			G	1
1645	Brancardier		executie			G	1
1646	Brancardier		executie			G	1
1647	Brancardier		executie			G	1
1648	Brancardier		executie			G	1
1649	Brancardier		executie			G	1
1650	Brancardier		executie			G	1
1651	Brancardier		executie			G	1
1652	Brancardier		executie			G	1
1653	Brancardier		executie			G	1
1654	Brancardier		executie			G	1
1655	Brancardier		executie			G	1
1656	Brancardier		executie			G	1
1657	Brancardier		executie			G	1
1658	Brancardier		executie			G	1
1659	Brancardier		executie			G	1
1660	Brancardier		executie			G	1
1661	Brancardier		executie			G	1
	SECTIE						185
1662	Medic		executie	Radiologie si imagistica medicala	Primar	S	1
1663	Medic		executie	Radiologie si imagistica medicala	Primar	S	1
1664	Medic		executie	Radiologie si imagistica medicala	Specialist	S	1
1665	Medic		executie	Radiologie si imagistica medicala	Specialist	S	1
1666	Medic		executie	Radiologie si imagistica medicala	Specialist	S	1
1667	Medic		executie	Radiologie si imagistica medicala	Specialist	S	1
1668	Medic		executie	Radiologie si imagistica medicala	Specialist	S	1
1669	Tehnician de radiol. și imagistică		executie	Radiologie si imagistica medicala	Debutant	S	1
1670	Asistent Medical		executie	Generala		PL	1
1671	Asistent Medical		executie	Generala		PL	1



1672	Asistent Medical		executie	Generala		PL	1
1673	Asistent Medical		executie	Generala		PL	1
1674	Asistent Medical		executie	Generala	Debutant	S	1
1675	Asistent Medical		executie	Generala	Debutant	S	1
1676	Asistent Medical		executie	Generala	Debutant	S	1
1677	Asistent Medical		executie	Generala	Debutant	S	1
	Laborator Radiologie in cadrul UPU						16
	UNITATEA DE PRIMIRE A URGENTELOR						201
1678	Administrator heliport	conducere				S	1
1679	Manager responsabil		executie			S	1
1680	Manager operațional		executie			S	1
1681	Manager de mentenanță		executie			S	1
1682	Manager de siguranță		executie			S	1
1683	Manager de conformitate		executie			S	1
1684	Agent de salvare (pompier)		executie			G/M	1
1685	Agent de salvare (pompier)		executie			G/M	1
1686	Agent de salvare (pompier)		executie			G/M	1
1687	Agent de salvare (pompier)		executie			G/M	1
1688	Agent de salvare (pompier)		executie			G/M	1
1689	Agent de salvare (pompier)		executie			G/M	1
1690	Agent de salvare (pompier)		executie			G/M	1
1691	Agent de salvare (pompier)		executie			G/M	1
1692	Agent de salvare (pompier)		executie			G/M	1
1693	Agent de salvare (pompier)		executie			G/M	1
1694	Agent de salvare (pompier)		executie			G/M	1
1695	Agent de salvare (pompier)		executie			G/M	1
	HELIPORT SMURD IS 3						18
1696	Medic rezident		executie	CHIRURGIE-PEDIATRICA	I	S	1
1697	Medic rezident		executie	CHIRURGIE-PEDIATRICA	I	S	1
1698	Medic rezident		executie	CHIRURGIE-PEDIATRICA	I	S	1
1699	Medic rezident		executie	CHIRURGIE-PEDIATRICA	I	S	1
1700	Medic rezident		executie	CHIRURGIE-PEDIATRICA	I	S	1
1701	Medic rezident		executie	CHIRURGIE-PEDIATRICA	I	S	1



1702	Medic rezident		executie	CHIRURGIE-PEDIATRICA	I	S	1
1703	Medic rezident		executie	CHIRURGIE-PEDIATRICA	I	S	1
1704	Medic rezident		executie	CARDIOLOGIE PEDIATRICA	I	S	1
1705	Medic rezident		executie	CARDIOLOGIE PEDIATRICA	I	S	1
1706	Medic rezident		executie	CARDIOLOGIE PEDIATRICA	I	S	1
1707	Medic rezident		executie	GASTROENTEROLOGIE PED	I	S	1
1708	Medic rezident		executie	GASTROENTEROLOGIE PED	I	S	1
1709	Medic rezident		executie	GASTROENTEROLOGIE PED	I	S	1
1710	Medic rezident		executie	GASTROENTEROLOGIE PED	I	S	1
1711	Medic rezident		executie	GASTROENTEROLOGIE PED	I	S	1
1712	Medic rezident		executie	GASTROENTEROLOGIE PED	I	S	1
1713	Medic rezident		executie	NEFROLOGIE PEDIATRICA	I	S	1
1714	Medic rezident		executie	NEFROLOGIE PEDIATRICA	I	S	1
1715	Medic rezident		executie	NEFROLOGIE PEDIATRICA	I	S	1
1716	Medic rezident		executie	NEFROLOGIE PEDIATRICA	I	S	1
1717	Medic rezident		executie	ONCOLOGIE SI HEMATOLOGIE PED	I	S	1
1718	Medic rezident		executie	ONCOLOGIE SI HEMATOLOGIE PED	I	S	1
1719	Medic rezident		executie	ONCOLOGIE SI HEMATOLOGIE PED	I	S	1
1720	Medic rezident		executie	ONCOLOGIE SI HEMATOLOGIE PED	I	S	1
1721	Medic rezident		executie	ORTOPEDIE-PEDIATRICA	I	S	1
1722	Medic rezident		executie	ORTOPEDIE-PEDIATRICA	I	S	1
1723	Medic rezident		executie	ORTOPEDIE-PEDIATRICA	I	S	1
1724	Medic rezident		executie	ORTOPEDIE-PEDIATRICA	I	S	1
1725	Medic rezident		executie	ORTOPEDIE-PEDIATRICA	I	S	1
1726	Medic rezident		executie	PEDIATRIE	I	S	1
1727	Medic rezident		executie	PEDIATRIE	I	S	1
1728	Medic rezident		executie	PEDIATRIE	I	S	1
1729	Medic rezident		executie	PEDIATRIE	I	S	1
1730	Medic rezident		executie	PEDIATRIE	I	S	1
1731	Medic rezident		executie	PEDIATRIE	I	S	1
1732	Medic rezident		executie	PEDIATRIE	I	S	1
1733	Medic rezident		executie	PEDIATRIE	I	S	1
1734	Medic rezident		executie	PEDIATRIE	I	S	1



1735	Medic rezident		executie	PEDIATRIE	I	S	1
1736	Medic rezident		executie	PEDIATRIE	I	S	1
1737	Medic rezident		executie	PEDIATRIE	I	S	1
1738	Medic rezident		executie	PEDIATRIE	I	S	1
1739	Medic rezident		executie	PEDIATRIE	I	S	1
1740	Medic rezident		executie	PEDIATRIE	I	S	1
1741	Medic rezident		executie	PEDIATRIE	I	S	1
1742	Medic rezident		executie	PEDIATRIE	I	S	1
1743	Medic rezident		executie	PEDIATRIE	I	S	1
1744	Medic rezident		executie	PNEUMOLOGIE PEDIATRICA	I	S	1
1745	Medic rezident		executie	PNEUMOLOGIE PEDIATRICA	I	S	1
1746	Medic rezident		executie	PNEUMOLOGIE PEDIATRICA	I	S	1
1747	Medic rezident		executie	PNEUMOLOGIE PEDIATRICA	I	S	1
1748	Medic rezident		executie	PNEUMOLOGIE PEDIATRICA	I	S	1
1749	Medic rezident		executie	MEDICINA DE FAMILIE	I	S	1
1750	Medic rezident		executie	MEDICINA DE FAMILIE	I	S	1
1751	Medic rezident		executie	MEDICINA DE FAMILIE	I	S	1
1752	Medic rezident		executie	MEDICINA DE FAMILIE	I	S	1
1753	Medic rezident		executie	MEDICINA DE FAMILIE	I	S	1
1754	Medic rezident		executie	MEDICINA DE FAMILIE	I	S	1
1755	Medic rezident		executie	MEDICINA DE FAMILIE	I	S	1
1756	Medic rezident		executie	MEDICINA DE FAMILIE	I	S	1
1757	Medic rezident		executie	MEDICINA FIZICA SI BALNEOLOFIZIOTE	I	S	1
1758	Medic rezident		executie	MEDICINA FIZICA SI BALNEOLOFIZIOTE	II	S	1
1759	Medic rezident		executie	MICROBIOLOGIE MEDICALA	II	S	1
1760	Medic rezident		executie	CHIRURGIE-PEDIATRICA	II	S	1
1761	Medic rezident		executie	CHIRURGIE-PEDIATRICA	II	S	1
1762	Medic rezident		executie	CHIRURGIE-PEDIATRICA	II	S	1
1763	Medic rezident		executie	CHIRURGIE-PEDIATRICA	II	S	1
1764	Medic rezident		executie	DERMATOVENEROLOGIE	II	S	1
1765	Medic rezident		executie	GASTROENTEROLOGIE PED	II	S	1
1766	Medic rezident		executie	GASTROENTEROLOGIE PED	II	S	1
1767	Medic rezident		executie	GASTROENTEROLOGIE PED	II	S	1



1768	Medic rezident		executie	GASTROENTEROLOGIE PED	II	S	1
1769	Medic rezident		executie	GASTROENTEROLOGIE PED	II	S	1
1770	Medic rezident		executie	ORTOPEDIE-PEDIATRICA	II	S	1
1771	Medic rezident		executie	ORTOPEDIE-PEDIATRICA	II	S	1
1772	Medic rezident		executie	ORTOPEDIE-PEDIATRICA	II	S	1
1773	Medic rezident		executie	ORTOPEDIE-PEDIATRICA	II	S	1
1774	Medic rezident		executie	ORTOPEDIE-PEDIATRICA	II	S	1
1775	Medic rezident		executie	PEDIATRIE	II	S	1
1776	Medic rezident		executie	PEDIATRIE	II	S	1
1777	Medic rezident		executie	PEDIATRIE	II	S	1
1778	Medic rezident		executie	PEDIATRIE	II	S	1
1779	Medic rezident		executie	PEDIATRIE	II	S	1
1780	Medic rezident		executie	PEDIATRIE	II	S	1
1781	Medic rezident		executie	PEDIATRIE	II	S	1
1782	Medic rezident		executie	PEDIATRIE	II	S	1
1783	Medic rezident		executie	PEDIATRIE	II	S	1
1784	Medic rezident		executie	PEDIATRIE	II	S	1
1785	Medic rezident		executie	PEDIATRIE	II	S	1
1786	Medic rezident		executie	PEDIATRIE	II	S	1
1787	Medic rezident		executie	PEDIATRIE	II	S	1
1788	Medic rezident		executie	PEDIATRIE	II	S	1
1789	Medic rezident		executie	PEDIATRIE	II	S	1
1790	Medic rezident		executie	PEDIATRIE	II	S	1
1791	Medic rezident		executie	PEDIATRIE	II	S	1
1792	Medic rezident		executie	PEDIATRIE	II	S	1
1793	Medic rezident		executie	PEDIATRIE	II	S	1
1794	Medic rezident		executie	PEDIATRIE	II	S	1
1795	Medic rezident		executie	PEDIATRIE	II	S	1
1796	Medic rezident		executie	PEDIATRIE	II	S	1
1797	Medic rezident		executie	PEDIATRIE	II	S	1
1798	Medic rezident		executie	PEDIATRIE	II	S	1
1799	Medic rezident		executie	PEDIATRIE	II	S	1
1800	Medic rezident		executie	PEDIATRIE	II	S	1



1801	Medic rezident		executie	PEDIATRIE	II	S	1
1802	Medic rezident		executie	PEDIATRIE	II	S	1
1803	Medic rezident		executie	PEDIATRIE	II	S	1
1804	Medic rezident		executie	PEDIATRIE	II	S	1
1805	Medic rezident		executie	PEDIATRIE	II	S	1
1806	Medic rezident		executie	PEDIATRIE	II	S	1
1807	Medic rezident		executie	PEDIATRIE	II	S	1
1808	Medic rezident		executie	PEDIATRIE	II	S	1
1809	Medic rezident		executie	MEDICINA DE FAMILIE	II	S	1
1810	Medic rezident		executie	MEDICINA DE FAMILIE	II	S	1
1811	Medic rezident		executie	NEFROLOGIE PEDIATRICA	II	S	1
1812	Medic rezident		executie	ONCOLOGIE SI HEMATOLOGIE PED	II	S	1
1813	Medic rezident		executie	ONCOLOGIE SI HEMATOLOGIE PED	II	S	1
1814	Medic rezident		executie	PNEUMOLOGIE PEDIATRICA	II	S	1
1815	Medic rezident		executie	PNEUMOLOGIE PEDIATRICA	II	S	1
1816	Medic rezident		executie	PNEUMOLOGIE PEDIATRICA	II	S	1
1817	Medic rezident		executie	PNEUMOLOGIE PEDIATRICA	II	S	1
1818	Medic rezident		executie	CHIRURGIE-PEDIATRICA	III	S	1
1819	Medic rezident		executie	CHIRURGIE-PEDIATRICA	III	S	1
1820	Medic rezident		executie	CHIRURGIE-PEDIATRICA	III	S	1
1821	Medic rezident		executie	CHIRURGIE-PEDIATRICA	III	S	1
1822	Medic rezident		executie	ORTOPEDIE-PEDIATRICA	III	S	1
1823	Medic rezident		executie	ORTOPEDIE-PEDIATRICA	III	S	1
1824	Medic rezident		executie	PEDIATRIE	III	S	1
1825	Medic rezident		executie	PEDIATRIE	III	S	1
1826	Medic rezident		executie	PEDIATRIE	III	S	1
1827	Medic rezident		executie	PEDIATRIE	III	S	1
1828	Medic rezident		executie	PEDIATRIE	III	S	1
1829	Medic rezident		executie	PEDIATRIE	III	S	1
1830	Medic rezident		executie	PEDIATRIE	III	S	1
1831	Medic rezident		executie	PEDIATRIE	III	S	1
1832	Medic rezident		executie	PEDIATRIE	III	S	1
1833	Medic rezident		executie	PEDIATRIE	III	S	1

JUDEȚUL IAȘI
CONSILIUL JUDEȚEAN IAȘI
Anexă la Hotărârea

Nr.

25 FEB 2026

Anul 1 febr. 2026

1834	Medic rezident		executie	PEDIATRIE	III	S	1
1835	Medic rezident		executie	PEDIATRIE	III	S	1
1836	Medic rezident		executie	PEDIATRIE	III	S	1
1837	Medic rezident		executie	PEDIATRIE	III	S	1
1838	Medic rezident		executie	PEDIATRIE	III	S	1
1839	Medic rezident		executie	PEDIATRIE	III	S	1
1840	Medic rezident		executie	PEDIATRIE	III	S	1
1841	Medic rezident		executie	PEDIATRIE	III	S	1
1842	Medic rezident		executie	PEDIATRIE	III	S	1
1843	Medic rezident		executie	PEDIATRIE	III	S	1
1844	Medic rezident		executie	PEDIATRIE	III	S	1
1845	Medic rezident		executie	PEDIATRIE	III	S	1
1846	Medic rezident		executie	PEDIATRIE	III	S	1
1847	Medic rezident		executie	PEDIATRIE	III	S	1
1848	Medic rezident		executie	PEDIATRIE	III	S	1
1849	Medic rezident		executie	PEDIATRIE	III	S	1
1850	Medic rezident		executie	PEDIATRIE	III	S	1
1851	Medic rezident		executie	PEDIATRIE	III	S	1
1852	Medic rezident		executie	PEDIATRIE	III	S	1
1853	Medic rezident		executie	PEDIATRIE	III	S	1
1854	Medic rezident		executie	PEDIATRIE	III	S	1
1855	Medic rezident		executie	MEDICINA DE FAMILIE	III	S	1
1856	Medic rezident		executie	ONCOLOGIE SI HEMATOLOGIE PED	III	S	1
1857	Medic rezident		executie	ONCOLOGIE SI HEMATOLOGIE PED	III	S	1
1858	Medic rezident		executie	ONCOLOGIE SI HEMATOLOGIE PED	III	S	1
1859	Medic rezident		executie	ONCOLOGIE SI HEMATOLOGIE PED	III	S	1
1860	Medic rezident		executie	ONCOLOGIE SI HEMATOLOGIE PED	III	S	1
1861	Medic rezident		executie	GASTROENTEROLOGIE PED	III	S	1
1862	Medic rezident		executie	GASTROENTEROLOGIE PED	III	S	1
1863	Medic rezident		executie	NEFROLOGIE PEDIATRICA	III	S	1
1864	Medic rezident		executie	NEFROLOGIE PEDIATRICA	III	S	1
1865	Medic rezident		executie	PNEUMOLOGIE PEDIATRICA	III	S	1
1866	Medic rezident		executie	PNEUMOLOGIE PEDIATRICA	III	S	1



1867	Medic rezident		executie	FARMACOLOGIE CLINICA	III	S	1
1868	Medic rezident		executie	CHIRURGIE-PEDIATRICA	IV	S	1
1869	Medic rezident		executie	CHIRURGIE-PEDIATRICA	IV	S	1
1870	Medic rezident		executie	CHIRURGIE-PEDIATRICA	IV	S	1
1871	Medic rezident		executie	CHIRURGIE-PEDIATRICA	IV	S	1
1872	Medic rezident		executie	CHIRURGIE-PEDIATRICA	IV	S	1
1873	Medic rezident		executie	MEDICINA DE FAMILIE	IV	S	1
1874	Medic rezident		executie	NEFROLOGIE PEDIATRICA	IV	S	1
1875	Medic rezident		executie	ORTOPEDIE-PEDIATRICA	IV	S	1
1876	Medic rezident		executie	ORTOPEDIE-PEDIATRICA	IV	S	1
1877	Medic rezident		executie	PEDIATRIE	IV	S	1
1878	Medic rezident		executie	PEDIATRIE	IV	S	1
1879	Medic rezident		executie	PEDIATRIE	IV	S	1
1880	Medic rezident		executie	PEDIATRIE	IV	S	1
1881	Medic rezident		executie	PEDIATRIE	IV	S	1
1882	Medic rezident		executie	PEDIATRIE	IV	S	1
1883	Medic rezident		executie	PEDIATRIE	IV	S	1
1884	Medic rezident		executie	PEDIATRIE	IV	S	1
1885	Medic rezident		executie	PEDIATRIE	IV	S	1
1886	Medic rezident		executie	PEDIATRIE	IV	S	1
1887	Medic rezident		executie	PEDIATRIE	IV	S	1
1888	Medic rezident		executie	PEDIATRIE	IV	S	1
1889	Medic rezident		executie	PEDIATRIE	IV	S	1
1890	Medic rezident		executie	PEDIATRIE	IV	S	1
1891	Medic rezident		executie	PEDIATRIE	IV	S	1
1892	Medic rezident		executie	PEDIATRIE	IV	S	1
1893	Medic rezident		executie	PEDIATRIE	IV	S	1
1894	Medic rezident		executie	PEDIATRIE	IV	S	1
1895	Medic rezident		executie	PEDIATRIE	IV	S	1
1896	Medic rezident		executie	PEDIATRIE	IV	S	1
1897	Medic rezident		executie	PEDIATRIE	IV	S	1
1898	Medic rezident		executie	PEDIATRIE	IV	S	1
1899	Medic rezident		executie	PEDIATRIE	IV	S	1

JUDEȚUL IAȘI
 CONSILIUL JUDEȚEAN IAȘI
 Anexă la Hotărârea
 Nr. 25, FEBRUARIE 2020
 Zilind...

1900	Medic rezident		executie	PEDIATRIE	IV	S	1
1901	Medic rezident		executie	PEDIATRIE	IV	S	1
1902	Medic rezident		executie	PEDIATRIE	IV	S	1
1903	Medic rezident		executie	PEDIATRIE	IV	S	1
1904	Medic rezident		executie	PEDIATRIE	IV	S	1
1905	Medic rezident		executie	PEDIATRIE	IV	S	1
1906	Medic rezident		executie	PEDIATRIE	IV	S	1
1907	Medic rezident		executie	PEDIATRIE	IV	S	1
1908	Medic rezident		executie	SANATATE PUBLICA SI MANAGEMENT	IV	S	1
1909	Medic rezident		executie	GASTROENTEROLOGIE PED	IV	S	1
1910	Medic rezident		executie	GASTROENTEROLOGIE PED	IV	S	1
1911	Medic rezident		executie	PNEUMOLOGIE PEDIATRICA	IV	S	1
1912	Medic rezident		executie	ONCOLOGIE SI HEMATOLOGIE PED	IV	S	1
1913	Medic rezident		executie	ORTOPEDIE-PEDIATRICA	V	S	1
1914	Medic rezident		executie	ORTOPEDIE-PEDIATRICA	V	S	1
1915	Medic rezident		executie	PEDIATRIE	V	S	1
1916	Medic rezident		executie	PEDIATRIE	V	S	1
1917	Medic rezident		executie	PEDIATRIE	V	S	1
1918	Medic rezident		executie	PEDIATRIE	V	S	1
1919	Medic rezident		executie	PEDIATRIE	V	S	1
1920	Medic rezident		executie	PEDIATRIE	V	S	1
1921	Medic rezident		executie	PEDIATRIE	V	S	1
1922	Medic rezident		executie	PEDIATRIE	V	S	1
1923	Medic rezident		executie	PEDIATRIE	V	S	1
1924	Medic rezident		executie	PEDIATRIE	V	S	1
1925	Medic rezident		executie	PEDIATRIE	V	S	1
1926	Medic rezident		executie	PEDIATRIE	V	S	1
1927	Medic rezident		executie	PEDIATRIE	V	S	1
1928	Medic rezident		executie	PEDIATRIE	V	S	1
1929	Medic rezident		executie	PEDIATRIE	V	S	1
1930	Medic rezident		executie	PEDIATRIE	V	S	1
1931	Medic rezident		executie	PEDIATRIE	V	S	1
1932	Medic rezident		executie	PEDIATRIE	V	S	1

JUDEȚUL IAȘI
CONSILIUL JUDEȚEAN IAȘI
Areea la Horia Teu

Nr. 25, FEB. 2020

Anul Luna Ziua

1933	Medic rezident		executie	DERMATOVENEROLOGIE	V	S	1
1934	Medic rezident		executie	PNEUMOLOGIE PEDIATRICA	V	S	1
1935	Medic rezident		executie	PNEUMOLOGIE PEDIATRICA	V	S	1
1936	Medic rezident		executie	PNEUMOLOGIE PEDIATRICA	V	S	1
1937	Medic rezident		executie	PSIHIATRIE	V	S	1
1938	Medic rezident		executie	NEFROLOGIE PEDIATRICA	V	S	1
1939	Medic rezident		executie	CARDIOLOGIE PEDIATRICA	V	S	1
1940	Medic rezident		executie	CHIRURGIE-PEDIATRICA	V	S	1
1941	Medic rezident		executie	CHIRURGIE-PEDIATRICA	V	S	1
1942	Medic rezident		executie	CHIRURGIE-PEDIATRICA	V	S	1
1943	Medic rezident		executie	ONCOLOGIE SI HEMATOLOGIE PED	V	S	1
1944	Medic rezident		executie	ONCOLOGIE SI HEMATOLOGIE PED	V	S	1
1945	Medic rezident		executie	GASTROENTEROLOGIE PED	V	S	1
1946	Medic rezident		executie	GASTROENTEROLOGIE PED	V	S	1
1947	Medic rezident		executie	GASTROENTEROLOGIE PED	V	S	1
1948	Medic rezident		executie	CARDIOLOGIE	VI	S	1
1949	Medic rezident		executie	ORTOPEDIE-PEDIATRICA	VI	S	1
1950	Medic rezident		executie	ORTOPEDIE-PEDIATRICA	VI	S	1
1951	Medic rezident		executie	ORTOPEDIE-PEDIATRICA	VI	S	1
1952	Medic rezident		executie	ORTOPEDIE-PEDIATRICA	VI	S	1
	Total medici rezidenti						257

**Manager interimar,
Diaconu Gheorghe**

**Şef serviciu RUNOS,
Iurescu Ramona**

JUDEȚUL IAȘI
CONSILIUL JUDEȚEAN IAȘI
Anexă la Hotărârea

nr.

25.FEB.2026

data